

RAB2 Antibody

RAB2, RAB2A, RAB2, member RAS oncogene family

CATALOG NO.: 46-258

HOST:

Goat

CLONALITY:

Polyclonal

INFORMATION:

RAB2 Antibody.

SOURCE:

RAB2 antibody was raised against a synthetic peptide of RAB2.

PROTEIN ACCESSION NUMBER(S) :

NP_002856

SPECIES REACTIVITY:

Human, Rabbit, Mouse, Rat, Chicken

TESTED APPLICATION:

WB, E

APPLICATION:

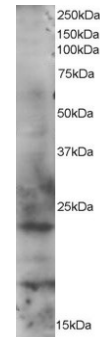
Western blot: Approx 23kDa and 18kDa bands seen in HeLa cell lysates. Recommended for use at 1-3µg/ml.

PURIFICATION:

Purified from goat serum by ammonium sulphate precipitation followed by antigen affinity chromatography using the immunizing peptide.

BUFFER:

0.1mg of purified antibody in 0.5 mg/ml in Tris saline, 0.02% sodium azide, pH7.3 with 0.5% bovine serum albumin.



Western blot analysis of RAB2 in HeLa lysate (RIPA buffer, 35µg total protein per lane) using RAB2 antibody (1µg/ml).

STORAGE:

Aliquot and store at -20°C. Minimize freezing and thawing.

REFERENCE:

Tisdale EJ, Balch WE. Rab2 is essential for the maturation of pre-Golgi intermediates. J Biol Chem 1996 Nov 15;271(46):29372-9

USER NOTES:

When working with antibodies optimal dilutions/concentrations should be determined by the end user for each application. The information provided is a guideline for antibody use. As with all ProSci antibodies, this antibody is for research use only.