

## PD-L1 Antibody

*CD274 antigen, PDCD1LG1, B7-H, B7H1, PDL1, PD-L1, PDCD1L1, programmed cell death 1 ligand 1, PDL1, HGNC:17635*

**CATALOG NO.: 46-156**

**HOST:**

Goat

**CLONALITY:**

Polyclonal

**INFORMATION:**

PD-L1 Antibody.

**SOURCE:**

PD-L1 antibody was raised against a synthetic peptide of PD-L1.

**PROTEIN ACCESSION NUMBER(S) :**

NP\_054862.1

**SPECIES REACTIVITY:**

Human

**TESTED APPLICATION:**

ELISA, Western Blot, Immunohistochemistry

**APPLICATION:**

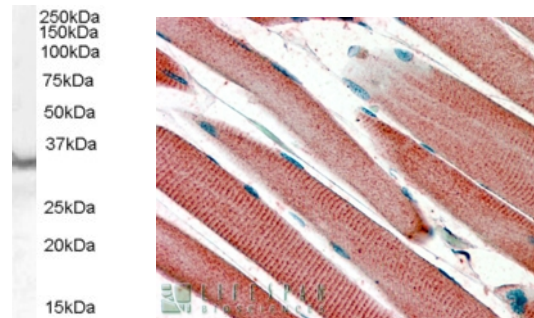
Peptide ELISA: antibody detection limit dilution 1:8000.  
Western Blot: Approx 35kDa band observed in Human Heart lysates (calculated MW of 33.3kDa according to NP\_054862.1). Recommended concentration: 0.3-1.0 µg/ml.  
Immunohistochemistry: In paraffin embedded Human Skeletal Muscle shows staining of the striated muscular fibres. Recommended concentration, 4-6µg/ml.

**PURIFICATION:**

Purified from goat serum by ammonium sulphate precipitation followed by antigen affinity chromatography using the immunizing peptide.

**BUFFER:**

0.1mg of purified antibody in 0.5 mg/ml in Tris saline, 0.02% sodium azide, pH7.3 with 0.5% bovine serum albumin.



Left: Western blot analysis of PD-L1 in Human Heart lysate (RIPA buffer, 30µg total protein per lane) using PD-L1 antibody (0.3µg/ml). Right: PD-L1 staining of differentiated human skeletal muscle PD-L1 antibody (4µg/mL).

**STORAGE:**

Aliquot and store at -20°C. Minimize freezing and thawing.

**REFERENCE:**

Thompson RH, Gillett MD, Cheville JC, Lohse CM, Dong H, Webster WS, Krejci KG, Lobo JR, Sengupta S, Chen L, Zincke H, Blute ML, Strome SE, Leibovich BC, Kwon ED. Costimulatory B7-H1 in renal cell carcinoma patients: Indicator of tumor aggressiveness and p

**USER NOTES:**

When working with antibodies optimal dilutions/concentrations should be determined by the end user for each application. The information provided is a guideline for antibody use. As with all ProSci antibodies, this antibody is for research use only.