

## PAX3 Antibody

*PAX3, WS1, CDHS, HUP2, paired box gene 3 (Waardenburg syndrome 1), paired domain gene 3, paired box homeotic gene 3 (Waardenburg syndrome 1)*

**CATALOG NO.:** 46-138

**HOST:**

Goat

**CLONALITY:**

Polyclonal

**INFORMATION:**

PAX3 Antibody. This antibody is expected to recognise all 7 reported human isoforms (as represented by NP\_000429.2; NP\_039230.1; NP\_852122;.1 NP\_852123.1; NP\_852124.1; NP\_852125.1 and NP\_852126.1).

**SOURCE:**

PAX3 antibody was raised against a synthetic peptide of PAX3.

**PROTEIN ACCESSION NUMBER(S) :**

NP\_000429.2, NP\_039230.1, NP\_852122;.1 NP\_852123.1, NP\_852124.1, NP\_852125.1, NP\_852126.1

**SPECIES REACTIVITY:**

Human, Mouse, Rat

**TESTED APPLICATION:**

E, IHC

**APPLICATION:**

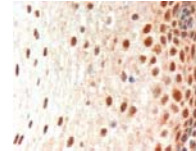
Peptide ELISA: antibody detection limit dilution 1:64,000.  
Western Blot: Preliminary experiments gave an approx 30-35kDa band in Human Kidney lysates at 1ug/ml. Please note that currently we cannot find an explanation in the literature for the band we observe given the predicted sizes of approx. 24-58kDda according to NP\_000429.2; NP\_039230.1; NP\_852122;.1 NP\_852123.1; NP\_852124.1; NP\_852125.1; NP\_852126.1.

**PURIFICATION:**

Purified from goat serum by ammonium sulphate precipitation followed by antigen affinity chromatography using the immunizing peptide.

**BUFFER:**

0.1mg of purified antibody in 0.5 mg/ml in Tris saline, 0.02% sodium azide, pH7.3 with 0.5% bovine serum albumin.



Western blot analysis of PAX3 in paraffin embedded Human Oesophagus using PAX3 antibody (3µg/ml).

**STORAGE:**

Aliquot and store at -20°C. Minimize freezing and thawing.

**REFERENCE:**

Tsukamoto K, Nakamura Y, Niikawa N. Isolation of two isoforms of the PAX3 gene transcripts and their tissue-specific alternative expression in human adult tissues. Hum Genet. 1994 Mar;93(3):270-4.

**USER NOTES:**

When working with antibodies optimal dilutions/concentrations should be determined by the end user for each application. The information provided is a guideline for antibody use. As with all ProSci antibodies, this antibody is for research use only.