

## NAPSIN A Antibody

*pronapsin A, KAP, Kdap, NAPI, NAPA, SNAPA, napsin A aspartic peptidase;*

**CATALOG NO.:** 45-934

**HOST:**

Goat

**CLONALITY:**

Polyclonal

**INFORMATION:**

NAPSIN A Antibody.

**SOURCE:**

NAPSIN A antibody was raised against a synthetic peptide of NAPSIN A.

**PROTEIN ACCESSION NUMBER(S) :**

NP\_004842

**SPECIES REACTIVITY:**

Human

**TESTED APPLICATION:**

WB, E

**APPLICATION:**

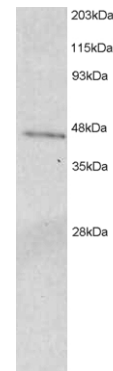
Western blot: Approx 40 kDa band seen in 293 Lysate.  
Recommended for use at 1-3 µg/ml.

**PURIFICATION:**

Purified from goat serum by ammonium sulphate precipitation followed by antigen affinity chromatography using the immunizing peptide.

**BUFFER:**

0.1mg of purified antibody in 0.5 mg/ml in Tris saline, 0.02% sodium azide, pH7.3 with 0.5% bovine serum albumin.



Western blot analysis of NAPSIN A in 293 lysate (RIPA buffer, 1.4E+05 cells per lane) using NAPSIN A antibody (2µg/ml).

**STORAGE:**

Aliquot and store at -20°C. Minimize freezing and thawing.

**REFERENCE:**

Schauer-Vukasinovic V, Bur D, Kling D, Gruninger F, Giller T. Human napsin A: expression, immunochemical detection, and tissue localization. FEBS Lett 1999 Nov 26;462(1-2):135-9

**USER NOTES:**

When working with antibodies optimal dilutions/concentrations should be determined by the end user for each application. The information provided is a guideline for antibody use. As with all ProSci antibodies, this antibody is for research use only.