

M6prbp1 Antibody

M6prbp1, mannose-6-phosphate receptor binding protein 1, 1300012C15Rik

CATALOG NO.: 45-852

HOST:

Goat

CLONALITY:

Polyclonal

INFORMATION:

M6prbp1 Antibody.

SOURCE:

M6prbp1 antibody was raised against a synthetic peptide of M6prbp1.

PROTEIN ACCESSION NUMBER(S) :

NP_080112.1

SPECIES REACTIVITY:

Mouse, Rat

TESTED APPLICATION:

WB, E

APPLICATION:

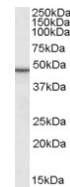
Peptide ELISA: antibody detection limit dilution 1:16,000.
Western Blot: Approx 48kDa band observed in Rat Skin lysates (calculated MW of 47.3kDa according to Mouse NP_080112.1). Recommended concentration: 1-3µg/ml.

PURIFICATION:

Purified from goat serum by ammonium sulphate precipitation followed by antigen affinity chromatography using the immunizing peptide.

BUFFER:

0.1mg of purified antibody in 0.5 mg/ml in Tris saline, 0.02% sodium azide, pH7.3 with 0.5% bovine serum albumin.



Western blot analysis of M6prbp1 in Rat Skin lysate (35µg protein in RIPA buffer) using M6prbp1 antibody (0.1µg/ml).

STORAGE:

Aliquot and store at -20°C. Minimize freezing and thawing.

REFERENCE:

Wolins NE, Brasaemle DL, Bickel PE. A proposed model of fat packaging by exchangeable lipid droplet proteins. FEBS Lett. 2006 Oct 9;580(23):5484-91. Epub 2006 Sep 1. Review.

USER NOTES:

When working with antibodies optimal dilutions/concentrations should be determined by the end user for each application. The information provided is a guideline for antibody use. As with all ProSci antibodies, this antibody is for research use only.