

KU70 Antibody

XRCC6, *X-ray repair complementing defective repair in Chinese hamster cells 6 (Ku autoantigen, 70kDa)*, *CTC75*, *CTCBF*, *G22P1*, *KU70*, *ML8*, *TCAA*, *ATP-dependent DNA helicase II, 70 kDa subunit*, *CTC box binding factor 75 kDa subunit*, *Ku autoantigen p70 subunit*, *OTTHUMP00000028581*, *thyroid autoantigen 70kD (Ku antigen)*, *thyroid autoantigen 70kDa (Ku antigen)*, *thyroid-lupus autoantigen p70*

CATALOG NO.: 45-817

HOST:

Goat

CLONALITY:

Polyclonal

INFORMATION:

KU70 Antibody.

SOURCE:

KU70 antibody was raised against a synthetic peptide of KU70.

PROTEIN ACCESSION NUMBER(S) :

NP_001460.1

SPECIES REACTIVITY:

Human

TESTED APPLICATION:

WB, E

APPLICATION:

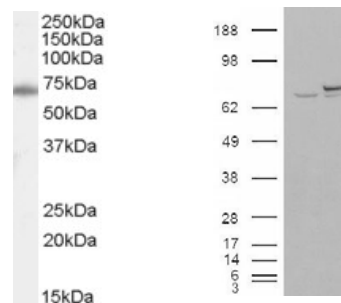
Peptide ELISA: antibody detection limit dilution 1:2,000.
Western Blot: Approx 70kDa band observed in lysates of cell lines A431, HeLa and HepG2 (calculated MW of 69.8kDa according to NP_001460.1). In transfected HEK293 transiently expressing KU70 a band of approx. 70kDa is observed. This band is not observed in the non-transfected HEK293. Recommended concentration: 0.1-0.3µg/ml.

PURIFICATION:

Purified from goat serum by ammonium sulphate precipitation followed by antigen affinity chromatography using the immunizing peptide.

BUFFER:

0.1mg of purified antibody in 0.5 mg/ml in Tris saline, 0.02% sodium azide, pH7.3 with 0.5% bovine serum albumin.



Left: Western blot analysis of KU70 in HeLa cell lysate (35µg protein in RIPA buffer) using KU70 antibody (0.1µg/ml). Right: HEK293 overexpressing KU70 and probed with KU70 antibody (mock transfection in first lane).

STORAGE:

Aliquot and store at -20°C. Minimize freezing and thawing.

REFERENCE:

Ribes-Zamora A, Mihalek I, Lichtarge O, Bertuch AA. Distinct faces of the Ku heterodimer mediate DNA repair and telomeric functions. *Nat Struct Mol Biol.* 2007 Apr;14(4):301-307. Epub 2007 Mar 11.

USER NOTES:

When working with antibodies optimal dilutions/concentrations should be determined by the end user for each application. The information provided is a guideline for antibody use. As with all ProSci antibodies, this antibody is for research use only.