

IFT88 Antibody

IFT88, TTC10, tetratricopeptide repeat domain 10, HGNC:20606, D13S1056E, DAF19, IFT88, MGC26259, RP11-172H24.2, TG737, hTg737, TPR repeat protein 10, polaris, Probe hTg737 (polycystic kidney disease, autosomal recessive), Tg737 protein, intraflagellar transport 88 homolog, recessive polycystic kidney disease protein Tg737 homolog

CATALOG NO.: 45-762

HOST:

Goat

CLONALITY:

Polyclonal

INFORMATION:

IFT88 Antibody. This antibody is expected to recognise both reported isoforms (NP_783195.2; NP_006522.2)

SOURCE:

IFT88 antibody was raised against a synthetic peptide of IFT88.

PROTEIN ACCESSION NUMBER(S) :

NP_783195.2, NP_006522.2

SPECIES REACTIVITY:

Human, Mouse, Rat, Dog

TESTED APPLICATION:

E, IHC

APPLICATION:

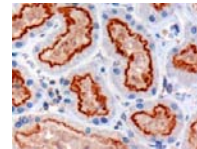
Peptide ELISA: antibody detection limit dilution 1:32,000.
Western Blot: Preliminary experiments in Human Kidney, Liver and Lung lysates gave no specific signal but low background (at antibody concentration up to 1µg/ml).

PURIFICATION:

Purified from goat serum by ammonium sulphate precipitation followed by antigen affinity chromatography using the immunizing peptide.

BUFFER:

0.1mg of purified antibody in 0.5 mg/ml in Tris saline, 0.02% sodium azide, pH7.3 with 0.5% bovine serum albumin.



Western blot analysis of IFT88 in paraffin embedded Human Kidney using IFT88 antibody (3µg/ml).

STORAGE:

Aliquot and store at -20°C. Minimize freezing and thawing.

REFERENCE:

Vogel G. News focus: Betting on cilia. Science. 2005 Oct 14;310(5746):216-8.

USER NOTES:

When working with antibodies optimal dilutions/concentrations should be determined by the end user for each application. The information provided is a guideline for antibody use. As with all ProSci antibodies, this antibody is for research use only.