

ICAM5 Precursor Antibody

ICAM5, intercellular adhesion molecule 5, telencephalin, TLCN, TLN, intercellular adhesion molecule 5, telencephalin

CATALOG NO.: 45-758

HOST:

Goat

CLONALITY:

Polyclonal

INFORMATION:

ICAM5 Precursor Antibody.

SOURCE:

ICAM5 Precursor antibody was raised against a synthetic peptide of ICAM5 Precursor.

PROTEIN ACCESSION NUMBER(S) :

NP_003250.2

SPECIES REACTIVITY:

Human, Mouse, Rat

TESTED APPLICATION:

E, IHC

APPLICATION:

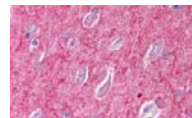
Peptide ELISA: antibody detection limit dilution 1:128,000.
Western Blot: Preliminary experiments gave an approx 200-250kDa band in lysates of Human Brain (Frontal Cortex and Hippocampus) and Mouse Brain after 0.05 µg/ml antibody staining. Please note that currently we cannot find an explanation in the literature for the band we observe given the calculated size of 97.2kDa according to NP_003250.2. The 200-250kDa band was successfully blocked by incubation with the immunizing peptide.

PURIFICATION:

Purified from goat serum by ammonium sulphate precipitation followed by antigen affinity chromatography using the immunizing peptide.

BUFFER:

0.1mg of purified antibody in 0.5 mg/ml in Tris saline, 0.02% sodium azide, pH7.3 with 0.5% bovine serum albumin.



Western blot analysis of ICAM5 Precursor in paraffin embedded Human Brain (Cerebral Cortex) using ICAM5 Precursor antibody (2.5µg/ml).

STORAGE:

Aliquot and store at -20°C. Minimize freezing and thawing.

REFERENCE:

Yoshihara Y, Oka S, Nemoto Y, Watanabe Y, Nagata S, Kagamiyama H, Mori K. An ICAM-related neuronal glycoprotein, telencephalin, with brain segment-specific expression. *Neuron*. 1994 Mar;12(3):541-53.

USER NOTES:

When working with antibodies optimal dilutions/concentrations should be determined by the end user for each application. The information provided is a guideline for antibody use. As with all ProSci antibodies, this antibody is for research use only.