

## HRS Antibody

*HGS, hepatocyte growth factor-regulated tyrosine kinase substrate, HGNC:4897, HRS, ZFYVE8, human growth factor-regulated tyrosine kinase substrate*

**CATALOG NO.: 45-746**

**HOST:**

Goat

**CLONALITY:**

Polyclonal

**INFORMATION:**

HRS Antibody.

**SOURCE:**

HRS antibody was raised against a synthetic peptide of HRS.

**PROTEIN ACCESSION NUMBER(S) :**

NP\_004703.1

**SPECIES REACTIVITY:**

Human, Mouse, Rat, Dog

**TESTED APPLICATION:**

E, IHC

**APPLICATION:**

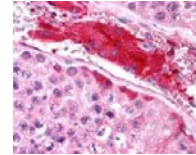
Peptide ELISA: antibody detection limit dilution 1:32,000.  
Western Blot: Preliminary experiments gave bands at approx 140kDa and 26kDa in Human lysates of monocytic leukemia cell line U937 after 0.3µg/ml antibody staining. Please note that currently we cannot find an explanation in the literature for the bands we observe given the calculated size of 86.2kDa according to NP\_004703.1. Both detected bands were successfully blocked by incubation with the immunizing peptide (and BLAST results with the immunizing peptide sequence did not identify any other proteins to explain the additional bands).

**PURIFICATION:**

Purified from goat serum by ammonium sulphate precipitation followed by antigen affinity chromatography using the immunizing peptide.

**BUFFER:**

0.1mg of purified antibody in 0.5 mg/ml in Tris saline, 0.02% sodium azide, pH7.3 with 0.5% bovine serum albumin.



Western blot analysis of HRS in paraffin embedded Human Testis using HRS antibody (2.5µg/ml).

**STORAGE:**

Aliquot and store at -20°C. Minimize freezing and thawing.

**REFERENCE:**

Kobayashi H, Tanaka N, Asao H, Miura S, Kyuuma M, Semura K, Ishii N, Sugamura K. Hrs, a mammalian master molecule in vesicular transport and protein sorting, suppresses the degradation of ESCRT proteins signal transducing adaptor molecule 1 and 2. J Biol

**USER NOTES:**

When working with antibodies optimal dilutions/concentrations should be determined by the end user for each application. The information provided is a guideline for antibody use. As with all ProSci antibodies, this antibody is for research use only.