

## GAD65 Antibody

*GAD2, GAD65, glutamate decarboxylase 2 (pancreatic islets and brain, 65kDa), Glutamate decarboxylase-2 (pancreas), glutamate decarboxylase 2 (pancreatic islets and brain, 65kD)*

**CATALOG NO.: 45-648**

**HOST:**

Goat

**CLONALITY:**

Polyclonal

**INFORMATION:**

GAD65 Antibody.

**SOURCE:**

GAD65 antibody was raised against a synthetic peptide of GAD65.

**PROTEIN ACCESSION NUMBER(S) :**

NP\_000809.1

**SPECIES REACTIVITY:**

Human, Mouse, Rat, Dog, Chimpanzee

**TESTED APPLICATION:**

WB, E

**APPLICATION:**

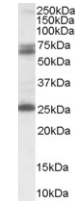
Peptide ELISA: antibody detection limit dilution 1:32,000.  
Western Blot: Approx 65+70kDa bands observed in Human Brain lysates. An additional band of 26kDa is observed. All bands were blocked by the immunising peptide (calculated MW of 65.4kDa according to NP\_000809.1). Recommended concentration: 0.1-0.3µg/ml.

**PURIFICATION:**

Purified from goat serum by ammonium sulphate precipitation followed by antigen affinity chromatography using the immunizing peptide.

**BUFFER:**

0.1mg of purified antibody in 0.5 mg/ml in Tris saline, 0.02% sodium azide, pH7.3 with 0.5% bovine serum albumin.



Western blot analysis of GAD65 in Human Brain lysate (35µg protein in RIPA buffer) using GAD65 antibody (0.1µg/ml).

**STORAGE:**

Aliquot and store at -20°C. Minimize freezing and thawing.

**REFERENCE:**

Meyre D, Boutin P, Tounian A, Deweirder M, Aout M, Jouret B, Heude B, Weill J, Tauber M, Tounian P, Froguel P. Is Glutamate Decarboxylase 2 (GAD2) a genetic link between low birth weight and subsequent development of obesity in children? J Clin Endocrinol

**USER NOTES:**

When working with antibodies optimal dilutions/concentrations should be determined by the end user for each application. The information provided is a guideline for antibody use. As with all ProSci antibodies, this antibody is for research use only.