

## GABPB2 Antibody

*GABPB2, GA binding protein transcription factor, beta subunit 2, BABPB2, E4TF1, E4TF1-47, E4TF1-53, E4TF1B, GABPB, GABPB1, NRF2B1, NRF2B2, GA binding protein transcription factor, beta subunit 1, 53kDa, GA binding protein transcription factor, beta subunit 2, 47kDa, nuclear respiratory factor-2 subunit beta*

**CATALOG NO.: 45-646**

**HOST:**

Goat

**CLONALITY:**

Polyclonal

**INFORMATION:**

GABPB2 Antibody. This antibody is expected to recognise isoform beta 1 (NP\_005245.2) and isoform gamma 1 (NP\_002032.2).

**SOURCE:**

GABPB2 antibody was raised against a synthetic peptide of GABPB2.

**PROTEIN ACCESSION NUMBER(S) :**

NP\_005245.2, NP\_002032.2

**SPECIES REACTIVITY:**

Human, Dog

**TESTED APPLICATION:**

WB, E

**APPLICATION:**

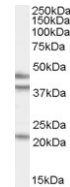
Peptide ELISA: antibody detection limit dilution 1:32,000.  
Western Blot: Approx 45+38kDa bands observed in lysates of cell line HeLa (calculated MW of 42.5kDa according to NP\_005245.2 and of 38.1kDa according to NP\_002032.2). Recommended concentration: 0.5-1.5µg/ml. An additional band of unknown identity was also consistently observed at 21kDa. This band was successfully blocked by incubation with the immunising peptide.

**PURIFICATION:**

Purified from goat serum by ammonium sulphate precipitation followed by antigen affinity chromatography using the immunizing peptide.

**BUFFER:**

0.1mg of purified antibody in 0.5 mg/ml in Tris saline, 0.02% sodium azide, pH7.3 with 0.5% bovine serum albumin.



Western blot analysis of GABPB2 in HeLa cell lysate (35µg protein in RIPA buffer) using GABPB2 antibody (0.5µg/ml).

**STORAGE:**

Aliquot and store at -20°C. Minimize freezing and thawing.

**REFERENCE:**

O'Leary DA, Koleski D, Kola I, Hertzog PJ, Ristevski S. Identification and expression analysis of alternative transcripts of the mouse GA-binding protein (Gabp) subunits alpha and beta1. Gene. 2005 Jan 3;344:79-92. Epub 2004 Nov 23.

**USER NOTES:**

When working with antibodies optimal dilutions/concentrations should be determined by the end user for each application. The information provided is a guideline for antibody use. As with all ProSci antibodies, this antibody is for research use only.