

## ERG Antibody

*ERG, v-ets erythroblastosis virus E26 oncogene like (avian), HGNC:3446, erg-3, p55, transcriptional regulator ERG (transforming protein ERG), v-ets avian erythroblastosis virus E26 oncogene related, v-ets erythroblastosis virus E26 oncogene like*

**CATALOG NO.: 45-549**

**HOST:**

Goat

**CLONALITY:**

Polyclonal

**INFORMATION:**

ERG Antibody. This antibody is expected to recognise both reported isoforms (NP\_891548.1; NP\_004440.1)

**SOURCE:**

ERG antibody was raised against a synthetic peptide of ERG.

**PROTEIN ACCESSION NUMBER(S) :**

NP\_891548.1, NP\_004440.1

**SPECIES REACTIVITY:**

Human, Mouse, Rat

**TESTED APPLICATION:**

E, IHC

**APPLICATION:**

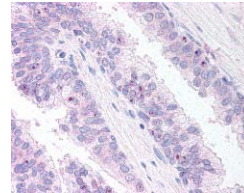
Peptide ELISA: antibody detection limit dilution 1:16,000.  
Western Blot: Preliminary experiments in lysates of cell lines HEK293, A431 and Jurkat gave no specific signal but low background (at antibody concentration up to 1µg/ml).

**PURIFICATION:**

Purified from goat serum by ammonium sulphate precipitation followed by antigen affinity chromatography using the immunizing peptide.

**BUFFER:**

0.1mg of purified antibody in 0.5 mg/ml in Tris saline, 0.02% sodium azide, pH7.3 with 0.5% bovine serum albumin.



Western blot analysis of ERG in paraffin embedded Human Prostate using ERG antibody (10µg/ml).

**STORAGE:**

Aliquot and store at -20°C. Minimize freezing and thawing.

**REFERENCE:**

Tomlins SA, Rhodes DR, Perner S, Dhanasekaran SM, Mehra R, Sun XW, Varambally S, Cao X, Tchinda J, Kuefer R, Lee C, Montie JE, Shah RB, Pienta KJ, Rubin MA, Chinnaiyan AM. Recurrent fusion of TMPRSS2 and ETS transcription factor genes in prostate cancer.

**USER NOTES:**

When working with antibodies optimal dilutions/concentrations should be determined by the end user for each application. The information provided is a guideline for antibody use. As with all ProSci antibodies, this antibody is for research use only.