

EIF2C1 Antibody

EIF2C1, eukaryotic translation initiation factor 2C, 1, AGO1, EIF2C, GERP95, Q99, Golgi Endoplasmic Reticulum protein 95 kDa, argonaute 1, putative RNA-binding protein Q99

CATALOG NO.: 45-525

HOST:

Goat

CLONALITY:

Polyclonal

INFORMATION:

EIF2C1 Antibody. This product is not expected to cross-react with EIF2C2, EIF2C3 and EIF2C4.

SOURCE:

EIF2C1 antibody was raised against a synthetic peptide of EIF2C1.

PROTEIN ACCESSION NUMBER(S) :

NP_036331.1

SPECIES REACTIVITY:

Human, Mouse, Rat, Dog

TESTED APPLICATION:

E, WB

APPLICATION:

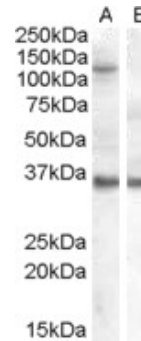
Peptide ELISA: antibody detection limit dilution 1:16000.
Western Blot: In transfected HEK293 transiently expressing human EIF2C1 bands of approx. 110kDa and 35kDa are observed. The 110kDa band is not observed in the non-transfected HEK293. The calculated molecular size is 97.2kDa according to NP_036331.1. Recommended concentration, 0.3-1µg/ml.

PURIFICATION:

Purified from goat serum by ammonium sulphate precipitation followed by antigen affinity chromatography using the immunizing peptide.

BUFFER:

0.1mg of purified antibody in 0.5 mg/ml in Tris saline, 0.02% sodium azide, pH7.3 with 0.5% bovine serum albumin.



Western blot analysis of EIF2C1 in HEK293 overexpressing EIF2C1 (non-transfected HEK293 in lane B) using EIF2C1 antibody.

STORAGE:

Aliquot and store at -20°C. Minimize freezing and thawing.

REFERENCE:

Gregory RI, Chendrimada TP, Cooch N, Shiekhattar R. Human RISC couples microRNA biogenesis and posttranscriptional gene silencing. Cell. 2005 Nov 18;123(4):631-40. Epub 2005 Nov 3.

USER NOTES:

When working with antibodies optimal dilutions/concentrations should be determined by the end user for each application. The information provided is a guideline for antibody use. As with all ProSci antibodies, this antibody is for research use only.