

DYX1C1 Antibody

DYX1C1, DYX1, EKN1, DYXC1, FLJ37882, dyslexia susceptibility 1 candidate 1

CATALOG NO.: 45-511

HOST:

Goat

CLONALITY:

Polyclonal

INFORMATION:

DYX1C1 Antibody. This antibody is expected to recognise only one of the three reported isoforms (NP_570722.2, isoform a).

SOURCE:

DYX1C1 antibody was raised against a synthetic peptide of DYX1C1.

PROTEIN ACCESSION NUMBER(S) :

NP_570722.2

SPECIES REACTIVITY:

Human, Mouse, Rat, Chimpanzee

TESTED APPLICATION:

WB, E

APPLICATION:

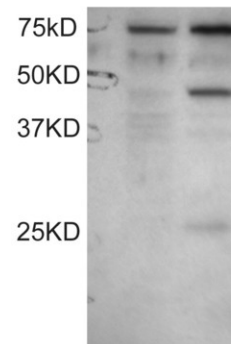
Peptide ELISA: antibody detection limit dilution 1:16,000. Western Blot: lysates of COS1 transfected with full length recombinant Human DYX1C1 gave bands at approx 48kDa after 0.1µg/ml antibody staining. In addition, a minor band of 24kDa is detected consistent with observations with N-terminal specific antibodies (unpublished data, LoTurco, Connecticut, USA). The 75kDa band is visible in the non-transfected COS1 also (first lane) and is therefore non-specific. We call for caution when this product is used in other assays than Western blot. Data kindly provided by Wang and LoTurco, University of Connecticut, USA.

PURIFICATION:

Purified from goat serum by ammonium sulphate precipitation followed by antigen affinity chromatography using the immunizing peptide.

BUFFER:

0.1mg of purified antibody in 0.5 mg/ml in Tris saline, 0.02% sodium azide, pH7.3 with 0.5% bovine serum albumin.



Western blot analysis of DYX1C1 in COS1 cell lysates: untransfected (left lane) and transfected with full length recombinant Human DYX1C1 (right lane) using DYX1C1 antibody (0.1µg/ml).

STORAGE:

Aliquot and store at -20°C. Minimize freezing and thawing.

REFERENCE:

Taipale M, Kaminen N, Nopola-Hemmi J, Haltia T, Myllyluoma B, Lyytinen H, Muller K, Kaaranen M, Lindsberg PJ, Hannula-Jouppi K, Kere J. A candidate gene for developmental dyslexia encodes a nuclear tetratricopeptide repeat domain protein dynamically regul

USER NOTES:

When working with antibodies optimal dilutions/concentrations should be determined by the end user for each application. The information provided is a guideline for antibody use. As with all ProSci antibodies, this antibody is for research use only.