

DAZL Antibody

DAZL, deleted in azoospermia-like, HGNC:2685, DAZH, DAZL1, DAZLA, MGC26406, SPGYLA, deleted in azoospermia-like autosomal, germline specific RNA binding protein, spermatogenesis gene on the Y-like autosomal

CATALOG NO.: 45-462

HOST:
Goat

CLONALITY:
Polyclonal

INFORMATION:
DAZL Antibody.

SOURCE:
DAZL antibody was raised against a synthetic peptide of DAZL.

PROTEIN ACCESSION NUMBER(S) :
NP_001342.2

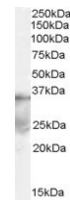
SPECIES REACTIVITY:
Human, Mouse, Rat, Dog

TESTED APPLICATION:
WB, E

APPLICATION:
Peptide ELISA: antibody detection limit dilution 1:64,000.
Western Blot: Approx 35kDa band observed in human ovary and human testes lysates (calculated MW of 33.2kDa according to NP_001342.2). Recommended concentration: 0.1-0.3µg/ml.

PURIFICATION:
Purified from goat serum by ammonium sulphate precipitation followed by antigen affinity chromatography using the immunizing peptide.

BUFFER:
0.1mg of purified antibody in 0.5 mg/ml in Tris saline, 0.02% sodium azide, pH7.3 with 0.5% bovine serum albumin.



Western blot analysis of DAZL in human ovary lysate (35µg protein in RIPA buffer) using DAZL antibody (0.1µg/ml).

STORAGE:

Aliquot and store at -20°C. Minimize freezing and thawing.

REFERENCE:

Cauffman G, Van de Velde H, Liebaers I, Van Steirteghem A. DAZL expression in human oocytes, preimplantation embryos and embryonic stem cells. Mol Hum Reprod. 2005 Jun;11(6):405-411. Epub 2005 May 6.

USER NOTES:

When working with antibodies optimal dilutions/concentrations should be determined by the end user for each application. The information provided is a guideline for antibody use. As with all ProSci antibodies, this antibody is for research use only.