

BAP Antibody

SIL1, BAP, endoplasmic reticulum chaperone SIL1, homolog of yeast, BiP-associated protein

CATALOG NO.: 45-321

HOST:

Goat

CLONALITY:

Polyclonal

INFORMATION:

BAP Antibody.

SOURCE:

BAP antibody was raised against a synthetic peptide of BAP.

PROTEIN ACCESSION NUMBER(S) :

NP_071909.1

SPECIES REACTIVITY:

Human

TESTED APPLICATION:

WB, E

APPLICATION:

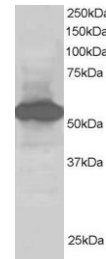
Peptide ELISA: antibody detection limit dilution 1:8,000.
Western Blot: Approx 55-60 kDa band observed in Human Liver and Kidney extracts (predicted MW of 53kDa according to NP_071909.1). Recommended for use at 1-2µg/ml.

PURIFICATION:

Purified from goat serum by ammonium sulphate precipitation followed by antigen affinity chromatography using the immunizing peptide.

BUFFER:

0.1mg of purified antibody in 0.5 mg/ml in Tris saline, 0.02% sodium azide, pH7.3 with 0.5% bovine serum albumin.



Western blot analysis of BAP in Human Kidney lysate (RIPA buffer, 30µg total protein per lane) using BAP antibody (1µg/ml).

STORAGE:

Aliquot and store at -20°C. Minimize freezing and thawing.

REFERENCE:

Chung KT, Shen Y, Hendershot LM. BAP, a Mammalian BiP-associated Protein, Is a Nucleotide Exchange Factor That Regulates the ATPase Activity of BiP. J Biol Chem. 2002 Dec 6;277(49):47557-63.

USER NOTES:

When working with antibodies optimal dilutions/concentrations should be determined by the end user for each application. The information provided is a guideline for antibody use. As with all ProSci antibodies, this antibody is for research use only.