

AGTR1 Antibody

AGTR1, angiotensin II receptor, type I, AG2S, AGTR1A, AGTR1B, AT1, AT1B, AT2R1, AT2R1A, AT2R1B, HAT1R, angiotensin receptor 1, angiotensin receptor 1B, type-1B angiotensin II receptor

CATALOG NO.: 45-216

HOST:

Goat

CLONALITY:

Polyclonal

INFORMATION:

AGTR1 Antibody. All reported variants represent identical protein (NP_000676.1, NP_004826.2, NP_033611.1, NP_114038.1 and NP_114438.1).

SOURCE:

AGTR1 antibody was raised against a synthetic peptide of AGTR1.

PROTEIN ACCESSION NUMBER(S) :

NP_000676.1, NP_004826.2, NP_033611.1, NP_114038.1, NP_114438.1

SPECIES REACTIVITY:

Human, Mouse, Rat

TESTED APPLICATION:

WB, E

APPLICATION:

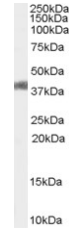
Peptide ELISA: antibody detection limit dilution 1:32,000.
Western Blot: Approx 38kDa band observed in Liver lysates of Human, Mouse and Rat (calculated MW of 41.1kDa according to NP_000676.1, NP_004826.2, NP_033611.1, NP_114038.1 and NP_114438.1). Recommended concentration: 0.3-1µg/ml.

PURIFICATION:

Purified from goat serum by ammonium sulphate precipitation followed by antigen affinity chromatography using the immunizing peptide.

BUFFER:

0.1mg of purified antibody in 0.5 mg/ml in Tris saline, 0.02% sodium azide, pH7.3 with 0.5% bovine serum albumin.



Western blot analysis of AGTR1 in Mouse Liver lysate (35µg protein in RIPA buffer) using AGTR1 antibody (0.3µg/ml).

STORAGE:

Aliquot and store at -20°C. Minimize freezing and thawing.

REFERENCE:

Wang M, Jiang C, Wang C, Yao Q. The Role of brain angiotensinergic AT(1) receptor in the carbachol-induced natriuresis and expression of nNOS in the Locus Coeruleus (LC) and proximal convoluted tubule (PCT). *Physiol Res.* 2006 Aug 22; [Epub ahead of print]

USER NOTES:

When working with antibodies optimal dilutions/concentrations should be determined by the end user for each application. The information provided is a guideline for antibody use. As with all ProSci antibodies, this antibody is for research use only.