

ADRB2 Antibody

ADRB2, adrenergic, beta-2-, receptor, surface [Homo sapiens], HGNC:286, ADRB2R, ADRBR, B2AR, BAR, BETA2AR, beta-2 adrenergic receptor, beta-2 adrenoceptor, catecholamine receptor

CATALOG NO.: 45-212

HOST:

Goat

CLONALITY:

Polyclonal

INFORMATION:

ADRB2 Antibody.

SOURCE:

ADRB2 antibody was raised against a synthetic peptide of ADRB2.

PROTEIN ACCESSION NUMBER(S) :

NP_000015.1

SPECIES REACTIVITY:

Human

TESTED APPLICATION:

WB, E

APPLICATION:

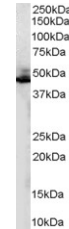
Peptide ELISA: antibody detection limit dilution 1:16,000.
Western Blot: Approx 48kDa band observed in human liver lysates (calculated MW of 46.6kDa according to NP_000015.1). Recommended concentration: 0.1-0.3µg/ml.

PURIFICATION:

Purified from goat serum by ammonium sulphate precipitation followed by antigen affinity chromatography using the immunizing peptide.

BUFFER:

0.1mg of purified antibody in 0.5 mg/ml in Tris saline, 0.02% sodium azide, pH7.3 with 0.5% bovine serum albumin.



Western blot analysis of ADRB2 in human liver lysate (35µg protein in RIPA buffer) using ADRB2 antibody (0.2µg/ml).

STORAGE:

Aliquot and store at -20°C. Minimize freezing and thawing.

REFERENCE:

Elefteriou F, Ahn JD, Takeda S, Starbuck M, Yang X, Liu X, Kondo H, Richards WG, Bannon TW, Noda M, Clement K, Vaisse C, Karsenty G. Leptin regulation of bone resorption by the sympathetic nervous system and CART. Nature. 2005 Feb 20; [Epub ahead of print]

USER NOTES:

When working with antibodies optimal dilutions/concentrations should be determined by the end user for each application. The information provided is a guideline for antibody use. As with all ProSci antibodies, this antibody is for research use only.