

Adenosine A2 beta Receptor Antibody

ADORA2B, adenosine A2b receptor, HGNC:264, ADORA2, netrin-1 receptor

CATALOG NO.: 45-206

HOST:

Goat

CLONALITY:

Polyclonal

INFORMATION:

Adenosine A2 beta Receptor Antibody.

SOURCE:

Adenosine A2 beta Receptor antibody was raised against a synthetic peptide of Adenosine A2 beta Receptor.

PROTEIN ACCESSION NUMBER(S) :

NP_000667.1

SPECIES REACTIVITY:

Human

TESTED APPLICATION:

E,IHC

APPLICATION:

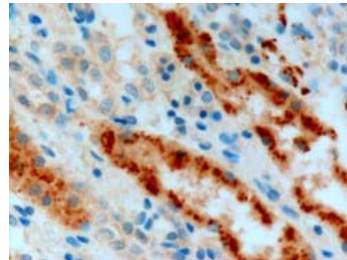
Peptide ELISA: Antibody detection limit dilution 1:4,000.
Western Blot: Preliminary experiments in human colon, lung and placenta lysates gave no specific signal but low background (at antibody concentration up to 1µg/ml).
Immunohistochemistry: In paraffin embedded Human Kidney shows cytoplasm staining in cells of renal tubules .
Recommended concentration, 3µg/ml.

PURIFICATION:

Purified from goat serum by ammonium sulphate precipitation followed by antigen affinity chromatography using the immunizing peptide.

BUFFER:

0.1mg of purified antibody in 0.5 mg/ml in Tris saline, 0.02% sodium azide, pH7.3 with 0.5% bovine serum albumin.



Immunohistochemistry staining of Adenosine A2 beta Receptor in human kidney using Adenosine A2 beta Receptor antibody at 3µg/ml.

STORAGE:

Aliquot and store at -20°C. Minimize freezing and thawing.

REFERENCE:

Bazzichi L, Trincavelli L, Rossi A, De Feo F, Lucacchini A, Bombardieri S, Martini C. A2B adenosine receptor activity is reduced in neutrophils from patients with systemic sclerosis. *Arthritis Res Ther.* 2005;7(2):R189-95. Epub 2004 Dec 10.

USER NOTES:

When working with antibodies optimal dilutions/concentrations should be determined by the end user for each application. The information provided is a guideline for antibody use. As with all ProSci antibodies, this antibody is for research use only.