

## ACSL5 Antibody

*ACSL5, acyl-CoA synthetase long-chain family member 5, HGNC:16526, ACS2, ACS5, FACL5, fatty-acid-Coenzyme A ligase, long-chain 5, long-chain acyl-CoA synthetase 5, long-chain fatty acid coenzyme A ligase 5*

**CATALOG NO.: 45-197**

**HOST:**

Goat

**CLONALITY:**

Polyclonal

**INFORMATION:**

ACSL5 Antibody. This antibody is expected to recognise isoform a (NP\_057318.2) and isoform b (NP\_976313.1 and NP\_976314.1).

**SOURCE:**

ACSL5 antibody was raised against a synthetic peptide of ACSL5.

**PROTEIN ACCESSION NUMBER(S) :**

NP\_057318.2, NP\_976313.1, NP\_976314.1

**SPECIES REACTIVITY:**

Human

**TESTED APPLICATION:**

WB, E

**APPLICATION:**

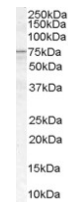
Peptide ELISA: antibody detection limit dilution 1:16,000.  
Western Blot: Approx 75kDa band observed in human spleen lysates (calculated MW of 76.0kDa according to NP\_976313.1 and NP\_976314.1). Recommended concentration: 1-3µg/ml.

**PURIFICATION:**

Purified from goat serum by ammonium sulphate precipitation followed by antigen affinity chromatography using the immunizing peptide.

**BUFFER:**

0.1mg of purified antibody in 0.5 mg/ml in Tris saline, 0.02% sodium azide, pH7.3 with 0.5% bovine serum albumin.



Western blot analysis of ACSL5 in human spleen lysate (35µg protein in RIPA buffer) using ACSL5 antibody (1µg/ml).

**STORAGE:**

Aliquot and store at -20°C. Minimize freezing and thawing.

**REFERENCE:**

Obermuller N, Keith M, Kopitz J, Autschbach F, Schirmacher P, Gassler N. Coeliac disease is associated with impaired expression of acyl-CoA-synthetase 5. Int J Colorectal Dis. 2005 Apr 5; [Epub ahead of print]

**USER NOTES:**

When working with antibodies optimal dilutions/concentrations should be determined by the end user for each application. The information provided is a guideline for antibody use. As with all ProSci antibodies, this antibody is for research use only.