

ABCD1 Antibody

ABCD1, ATP-binding cassette, sub-family D (ALD), member 1, ABC42, ALD, ALDP, AMN, adrenoleukodystrophy protein

CATALOG NO.: 45-182

HOST:

Goat

CLONALITY:

Polyclonal

INFORMATION:

ABCD1 Antibody.

SOURCE:

ABCD1 antibody was raised against a synthetic peptide of ABCD1.

PROTEIN ACCESSION NUMBER(S) :

NP_000024.2

SPECIES REACTIVITY:

Human

TESTED APPLICATION:

E, WB

APPLICATION:

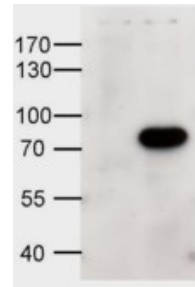
Peptide ELISA: antibody detection limit dilution 1:32,000. Western Blot: Preliminary experiments gave an approx 50kDa band in Human Brain (Cerebellum) lysates after 1µg/ml antibody staining. Please note that currently we cannot find an explanation in the literature for the band we observe given the calculated size of 82.9kDa according to NP_000024.2. The 50kDa band was successfully blocked by incubation with the immunizing peptide.

PURIFICATION:

Purified from goat serum by ammonium sulphate precipitation followed by antigen affinity chromatography using the immunizing peptide.

BUFFER:

0.1mg of purified antibody in 0.5 mg/ml in Tris saline, 0.02% sodium azide, pH7.3 with 0.5% bovine serum albumin.



Western blot analysis of HEK293 overexpressing human ABCD1 using ABCD1 antibody (1µg/ml).

STORAGE:

Aliquot and store at -20°C. Minimize freezing and thawing.

REFERENCE:

Höftberger R, Kunze M, Weinhofer I, Aboul-Enein F, Voigtländer T, Oezen I, Amann G, Bernheimer H, Budka H, Berger J. Distribution and cellular localization of adrenoleukodystrophy protein in human tissues: implications for X-linked adrenoleukodystrophy. N

USER NOTES:

When working with antibodies optimal dilutions/concentrations should be determined by the end user for each application. The information provided is a guideline for antibody use. As with all ProSci antibodies, this antibody is for research use only.