

## ABCB9 Antibody

*ABCB9, ATP-binding cassette, sub-family B (MDR/TAP), member 9, TAPL, KIAA1520, EST122234*

**CATALOG NO.:** 45-180

**HOST:**

Goat

**CLONALITY:**

Polyclonal

**INFORMATION:**

ABCB9 Antibody. This antibody is expected to recognise both human isoforms of this protein (as represented by NP\_062570 and NP\_062571)

**SOURCE:**

ABCB9 antibody was raised against a synthetic peptide of ABCB9.

**PROTEIN ACCESSION NUMBER(S) :**

NP\_062570, NP\_062571

**SPECIES REACTIVITY:**

Human

**TESTED APPLICATION:**

E, Immunohistochemistry

**APPLICATION:**

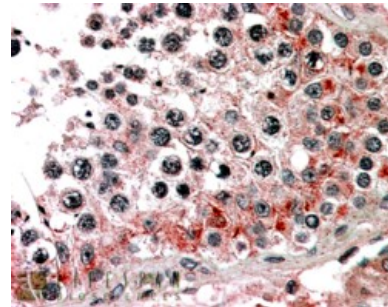
Peptide ELISA: antibody detection limit dilution 1:64000. Western Blot: Preliminary experiments gave no signal but low background in human brain and liver lysates at up to 1µg/ml. Immunohistochemistry: In paraffin embedded Human Testis shows vesiculate cytoplasm staining of primary spermatocytes. Recommended concentration, 3-5µg/ml.

**PURIFICATION:**

Purified from goat serum by ammonium sulphate precipitation followed by antigen affinity chromatography using the immunizing peptide.

**BUFFER:**

0.1mg of purified antibody in 0.5 mg/ml in Tris saline, 0.02% sodium azide, pH7.3 with 0.5% bovine serum albumin.



Immunohistochemistry staining of human testis using ABCB9 antibody at 3.8µg/ml.

**STORAGE:**

Aliquot and store at -20°C. Minimize freezing and thawing.

**REFERENCE:**

Zhang F, Zhang W, Liu L, Fisher CL, Hui D, Childs S, Dorovini-Zis K, Ling V. Characterization of ABCB9, an ATP binding cassette protein associated with lysosomes. J Biol Chem. 2000 Jul 28;275(30):23287-94.

**USER NOTES:**

When working with antibodies optimal dilutions/concentrations should be determined by the end user for each application. The information provided is a guideline for antibody use. As with all ProSci antibodies, this antibody is for research use only.