

4E-T Antibody

EIF4ENIF1, 4E-T, Clast4, FLJ21601, 2610509L04Rik, eukaryotic translation initiation factor 4E nuclear import factor 1, eIF4E-transporter

CATALOG NO.: 45-177

HOST:
Goat

CLONALITY:
Polyclonal

INFORMATION:
4E-T Antibody.

SOURCE:
4E-T antibody was raised against a synthetic peptide of 4E-T.

PROTEIN ACCESSION NUMBER(S) :
NP_062817.1

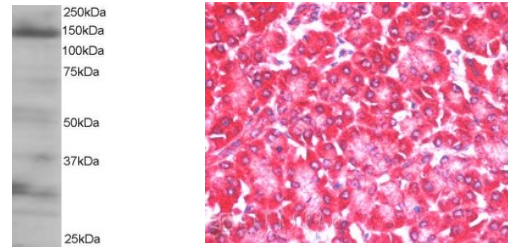
SPECIES REACTIVITY:
Human, Mouse, Rat

TESTED APPLICATION:
WB, E

APPLICATION:
Peptide ELISA: Antibody detection limit dilution >1/32,000.
Western Blot: Approx 140-150kDa band observed in 293 lysates (predicted size of approx. 108kDa according to NP_062817.1, however our observation agrees with that of Dostie et al (see below)). Recommended for use at 0.25-0.5µg/ml. Immunohistochemistry: In paraffin embedded Human Pancreas shows strong staining of cytoplasm in acinar cells. Recommended concentration 5-10µg/ml.

PURIFICATION:
Purified from goat serum by ammonium sulphate precipitation followed by antigen affinity chromatography using the immunizing peptide.

BUFFER:
0.1mg of purified antibody in 0.5 mg/ml in Tris saline, 0.02% sodium azide, pH7.3 with 0.5% bovine serum albumin.



Western blot analysis of 4E-T in 293 lysate (RIPA buffer, 35µg total protein per lane) using 4E-T antibody (0.25µg/ml). Immunohistochemistry staining of human pancreas using 4E-T antibody at 5µg/ml.

STORAGE:

Aliquot and store at -20°C. Minimize freezing and thawing.

REFERENCE:

Dostie J, Ferraiuolo M, Pause A, Adam SA, Sonenberg N. A novel shuttling protein, 4E-T, mediates the nuclear import of the mRNA 5' cap-binding protein, eIF4E. EMBO J. 2000 Jun 15;19(12):3142-56.

USER NOTES:

When working with antibodies optimal dilutions/concentrations should be determined by the end user for each application. The information provided is a guideline for antibody use. As with all ProSci antibodies, this antibody is for research use only.