

14-3-3 tau Antibody

YWHAQ, tyrosine 3-monooxygenase/tryptophan 5-monooxygenase activation protein, theta polypeptide, 14-3-3, IC5, HSI, 14-3-3 protein T-cell, 14-3-3 protein tau, 14-3-3 protein theta, protein tau, tyrosine 3/tryptophan 5 -monooxygenase activation protein, theta polypeptide

CATALOG NO.: 45-175

HOST:

Goat

CLONALITY:

Polyclonal

INFORMATION:

14-3-3 tau Antibody.

SOURCE:

14-3-3 tau antibody was raised against a synthetic peptide of 14-3-3 tau.

PROTEIN ACCESSION NUMBER(S) :

NP_006817.1

SPECIES REACTIVITY:

Human, Mouse, Rat, Dog

TESTED APPLICATION:

WB, E

APPLICATION:

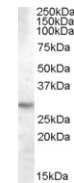
Peptide ELISA: antibody detection limit dilution 1:4,000.
Western Blot: Approx 28kDa band observed in Human Brain (Hippocampus) lysates (calculated MW of 27.8kDa according to NP_006817.1). Recommended concentration: 0.03-0.1µg/ml.

PURIFICATION:

Purified from goat serum by ammonium sulphate precipitation followed by antigen affinity chromatography using the immunizing peptide.

BUFFER:

0.1mg of purified antibody in 0.5 mg/ml in Tris saline, 0.02% sodium azide, pH7.3 with 0.5% bovine serum albumin.



Western blot analysis of 14-3-3 tau in Human Brain (Hippocampus) lysate (35µg protein in RIPA buffer) using 14-3-3 tau antibody (0.03µg/ml).

STORAGE:

Aliquot and store at -20°C. Minimize freezing and thawing.

REFERENCE:

Howlett KF, Sakamoto K, Garnham A, Cameron-Smith D, Hargreaves M. Resistance exercise and insulin regulate AS160 and interaction with 14-3-3 in human skeletal muscle. Diabetes. 2007 Jun;56(6):1608-14. Epub 2007 Mar 16.

USER NOTES:

When working with antibodies optimal dilutions/concentrations should be determined by the end user for each application. The information provided is a guideline for antibody use. As with all ProSci antibodies, this antibody is for research use only.