

## Osteopontin Antibody

*SPP1; secreted phosphoprotein 1 (osteopontin, bone sialoprotein I, early T-lymphocyte activation 1); HGNC:11255; BNSP; BSPI; ETA-1; MGC110940; OPN ; Secreted phosphoprotein-1 (osteopontin, bone sialoprotein); secreted phosphoprotein 1*

### CATALOG NO.: 45-152

#### HOST:

Goat

#### CLONALITY:

Polyclonal

#### INFORMATION:

Osteopontin Antibody.

#### SOURCE:

Osteopontin antibody was raised against a synthetic peptide near the C-terminus of SPP1.

#### PROTEIN ACCESSION NUMBER(S) :

NP\_000573.1

#### SPECIES REACTIVITY:

Human, Mouse, Rat, Dog

#### TESTED APPLICATION:

ELISA, Western Blot

#### APPLICATION:

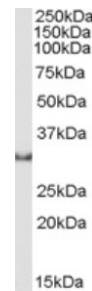
Peptide ELISA: antibody detection limit dilution 1:64,000.  
Western Blot: Approx 30kDa band observed in lysates of cell lines Jurkat and MOLT4. This band corresponds to the cleavage product from the 60kDa glycoprotein (calculated MW of 33.8kDa according to

#### PURIFICATION:

Purified from goat serum by ammonium sulphate precipitation followed by antigen affinity chromatography using the immunizing peptide.

#### BUFFER:

Antibody is supplied as 0.1mg of purified antibody. 0.5 mg/ml in Tris saline, 0.02% sodium azide, pH7.3 with 0.5% bovine serum albumin.



Western blot analysis of osteopontin in MOLT4 cell lysate (RIPA buffer, 30µg total protein per lane) using osteopontin antibody (1µg/ml).

#### STORAGE:

Aliquot and store at -20°C. Minimize freezing and thawing.

#### REFERENCE:

Kolb A, Kleeff J, Guweidhi A, Esposito I, Giese NA, Adwan H, Giese T, Buchler MW, Berger MR, Friess H. Osteopontin Influences the Invasiveness of Pancreatic Cancer Cells and is Increased in Neoplastic and Inflammatory Conditions. *Cancer Biol Ther.* 2005 Jul 5;4(7) [Epub ahead of print]

#### USER NOTES:

When working with antibodies optimal dilutions/concentrations should be determined by the end user for each application. The information provided is a guideline for antibody use. As with all ProSci antibodies, this antibody is for research use only.