

SMAD2 Antibody

MADH2; MAD, mothers against decapentaplegic homolog 2 (Drosophila); JV18; MADR2; SMAD2; JV18-1; Mothers against decapentaplegic, Drosophila, homolog of, 2; MAD (mothers against decapentaplegic, Drosophila) homolog 2

CATALOG NO.: 45-147

HOST:

Goat

CLONALITY:

Polyclonal

INFORMATION:

SMAD2 Antibody.

SOURCE:

SMAD2 antibody was raised against a synthetic peptide at an internal region of SMAD2.

PROTEIN ACCESSION NUMBER(S) :

NP_005892

SPECIES REACTIVITY:

Human

TESTED APPLICATION:

ELISA, Western Blot

APPLICATION:

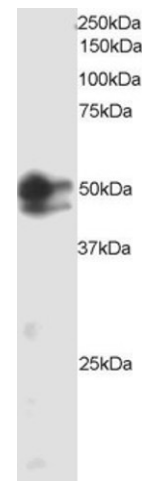
Western blot: Approx 45kDa and 50kDa bands seen in HeLa cell lysates. Recommended for use at 1-3µg/ml.

PURIFICATION:

Purified from goat serum by ammonium sulphate precipitation followed by antigen affinity chromatography using the immunizing peptide.

BUFFER:

Antibody is supplied as 0.1mg of purified antibody. 0.5 mg/ml in Tris saline, 0.02% sodium azide, pH7.3 with 0.5% bovine serum albumin.



Western blot analysis of SMAD2 in HeLa lysate (RIPA buffer, 35µg total protein per lane) using SMAD2 antibody (2µg/ml).

STORAGE:

Aliquot and store at -20°C. Minimize freezing and thawing.

REFERENCE:

Eppert K, Scherer SW, Ozcelik H, Pirone R, Hoodless P, Kim H, Tsui LC, Bapat B, Gallinger S, Andrulis IL, Thomsen GH, Wrana JL, Attisano L. MADR2 maps to 18q21 and encodes a TGFbeta-regulated MAD-related protein that is functionally mutated in colorectal carcinoma. Cell 1996 Aug 23;86(4):543-52

USER NOTES:

When working with antibodies optimal dilutions/concentrations should be determined by the end user for each application. The information provided is a guideline for antibody use. As with all ProSci antibodies, this antibody is for research use only.