

## PAI-1 Antibody

*SERPINE1; PAI; PAII; PAI-1; PLANH1; serine (or cysteine) proteinase inhibitor, clade E (nexin, plasminogen activator inhibitor type 1), member 1; plasminogen activator inhibitor, type I*

### CATALOG NO.: 45-142

#### HOST:

Goat

#### CLONALITY:

Polyclonal

#### INFORMATION:

PAI-1 Antibody.

#### SOURCE:

PAI-1 antibody was raised against a synthetic peptide at an internal region of PAI-1.

#### PROTEIN ACCESSION NUMBER(S) :

NP\_000593.1

#### SPECIES REACTIVITY:

Human, Dog, Chimpanzee

#### TESTED APPLICATION:

ELISA, Western Blot

#### APPLICATION:

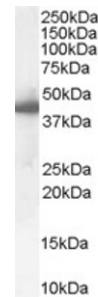
Peptide ELISA: antibody detection limit dilution 1:32,000.  
Western Blot: Approx 45kDa band observed in Human Duodenum, Liver and Lung lysates (calculated MW of 45.1kDa according to NP\_000593.1). Recommended concentration: 0.1-0.3µg/ml.

#### PURIFICATION:

Purified from goat serum by ammonium sulphate precipitation followed by antigen affinity chromatography using the immunizing peptide.

#### BUFFER:

Antibody is supplied as 0.1mg of purified antibody. 0.5 mg/ml in Tris saline, 0.02% sodium azide, pH7.3 with 0.5% bovine serum albumin.



Western blot analysis of PAI-1 in Human Liver lysate (35µg protein in RIPA buffer) using PAI-1 antibody (0.1µg/ml).

#### STORAGE:

Aliquot and store at -20°C. Minimize freezing and thawing.

#### REFERENCE:

Baumruker T, Csonga R, Pursch E, Pfeffer A, Urtz N, Sutton S, Bofill-Cardona E, Cooke M, Prieschl E. Activation of mast cells by incorporation of cholesterol into rafts. *Int Immunol.* 2003 Oct;15(10):1207-18.

#### USER NOTES:

When working with antibodies optimal dilutions/concentrations should be determined by the end user for each application. The information provided is a guideline for antibody use. As with all ProSci antibodies, this antibody is for research use only.