

RAB11A Antibody

RAB11A; YL8; RAB11A, member RAS oncogene family; RAB 11A, member oncogene family

CATALOG NO.: 45-130

HOST:

Goat

CLONALITY:

Polyclonal

INFORMATION:

RAB11A Antibody. This is also expected to recognise the hypothetical human protein similar to Ras-related protein Rab-11A (XM_050908).

SOURCE:

RAB11A antibody was raised against a synthetic peptide near the C-terminus of RAB11A.

PROTEIN ACCESSION NUMBER(S) :

NP_004654

SPECIES REACTIVITY:

Human, Mouse, Rat, Dog, Rabbit, Monkey

TESTED APPLICATION:

ELISA, Western Blot

APPLICATION:

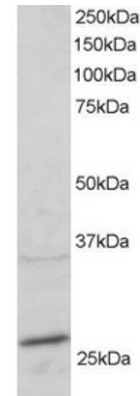
Western blot: Approx 25-28kDa band seen in Mouse Heart lysate (predicted MW 25kDa). Recommended for use at 1-3µg/ml.

PURIFICATION:

Purified from goat serum by ammonium sulphate precipitation followed by antigen affinity chromatography using the immunizing peptide.

BUFFER:

Antibody is supplied as 0.1mg of purified antibody. 0.5 mg/ml in Tris saline, 0.02% sodium azide, pH7.3 with 0.5% bovine serum albumin.



Western blot analysis of RAB11A in Mouse Heart lysate (RIPA buffer, 30µg total protein per lane) using RAB11A antibody (2µg/ml).

STORAGE:

Aliquot and store at -20°C. Minimize freezing and thawing.

REFERENCE:

Gromov PS, Celis JE, Hansen C, Tommerup N, Gromova I, Madsen P. Human rab11a: transcription, chromosome mapping and effect on the expression levels of host GTP-binding proteins. FEBS Lett 1998 Jun 16;429(3):359-64

USER NOTES:

When working with antibodies optimal dilutions/concentrations should be determined by the end user for each application. The information provided is a guideline for antibody use. As with all ProSci antibodies, this antibody is for research use only.