

Pyruvate Dehydrogenase Antibody

PDHX; E3BP; OPDX; PDX1; proX; DLDBP; pyruvate dehydrogenase complex, component X; E3-binding protein; pyruvate dehydrogenase complex, lipoyl-containing component X

CATALOG NO.: 45-107

HOST:

Goat

CLONALITY:

Polyclonal

INFORMATION:

Pyruvate Dehydrogenase Antibody.

SOURCE:

Pyruvate dehydrogenase antibody was raised against a synthetic peptide near the C-terminus of pyruvate dehydrogenase.

PROTEIN ACCESSION NUMBER(S) :

NP_003468.1

SPECIES REACTIVITY:

Human, Rat, Mouse, Chimpanzee

TESTED APPLICATION:

ELISA, Western Blot, IHC

APPLICATION:

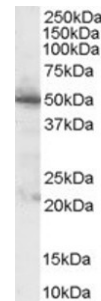
Peptide ELISA: antibody detection limit dilution 1:32,000.
Western Blot: Approx 50kDa band observed in Human Pancreas lysate (calculated MW of 54.2kDa according to NP_003468.1). Recommended concentration: 0.1-1µg/ml.

PURIFICATION:

Purified from goat serum by ammonium sulphate precipitation followed by antigen affinity chromatography using the immunizing peptide.

BUFFER:

Antibody is supplied as 0.1mg of purified antibody. 0.5 mg/ml in Tris saline, 0.02% sodium azide, pH7.3 with 0.5% bovine serum albumin.



Western blot analysis of pyruvate dehydrogenase in Human Pancreas lysate (35µg protein in RIPA buffer) using pyruvate dehydrogenase antibody (1µg/ml). Immunohistochemistry of pyruvate dehydrogenase in paraffin embedded Human Pancreas using pyruvate dehydr

STORAGE:

Aliquot and store at -20°C. Minimize freezing and thawing.

REFERENCE:

Li Y, Cao X, Li LX, Brubaker PL, Edlund H, Drucker DJ. {beta}-Cell Pdx1 Expression Is Essential for the Glucoregulatory, Proliferative, and Cytoprotective Actions of Glucagon-Like Peptide-1. Diabetes. 2005 Feb;54(2):482-91.

USER NOTES:

When working with antibodies optimal dilutions/concentrations should be determined by the end user for each application. The information provided is a guideline for antibody use. As with all ProSci antibodies, this antibody is for research use only.