

PACSIN1 Antibody

PACSIN1; protein kinase C and casein kinase substrate in neurons 1; KIAA1379

CATALOG NO.: 45-103

HOST:

Goat

CLONALITY:

Polyclonal

INFORMATION:

PACSIN1 Antibody.

SOURCE:

PACSIN1 antibody was raised against a synthetic peptide near the N-terminus of PACSIN1.

PROTEIN ACCESSION NUMBER(S) :

NP_065855.1

SPECIES REACTIVITY:

Human

TESTED APPLICATION:

ELISA, Western Blot

APPLICATION:

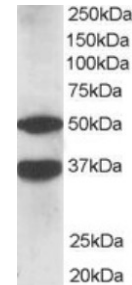
Peptide ELISA: antibody detection limit dilution 1:32,000.
Western Blot: experiments gave bands at approx 50kDa and 37kDa in Human Brain lysate after 1µg/ml antibody staining. Calculated MW is 50kDa according to NP_065855.1. Both bands were successfully blocked by incubation with the immunizing peptide. Recommended concentration: 1-3µg/ml.

PURIFICATION:

Purified from goat serum by ammonium sulphate precipitation followed by antigen affinity chromatography using the immunizing peptide.

BUFFER:

Antibody is supplied as 0.1mg of purified antibody. 0.5 mg/ml in Tris saline, 0.02% sodium azide, pH7.3 with 0.5% bovine serum albumin.



Western blot analysis of PACSIN1 in Human Brain lysate (35µg protein in RIPA buffer) using PACSIN1 antibody (1µg/ml).

STORAGE:

Aliquot and store at -20°C. Minimize freezing and thawing.

REFERENCE:

Modregger J, DiProspero NA, Charles V, Tagle DA, Plomann M. PACSIN 1 interacts with huntingtin and is absent from synaptic varicosities in presymptomatic Huntington's disease brains. Hum Mol Genet. 2002 Oct 1;11(21):2547-58.

USER NOTES:

When working with antibodies optimal dilutions/concentrations should be determined by the end user for each application. The information provided is a guideline for antibody use. As with all ProSci antibodies, this antibody is for research use only.