

Aurora Kinase Antibody

AURKA; aurora kinase A; AIK; ARK1; AURA; AURORA2; BTAK; MGC34538; STK15; STK6; STK7; IPL1-related kinase; aurora-A; aurora-related kinase 1; aurora/IPL1-like kinase; breast-tumor-amplified kinase; serine/threonine kinase 15; serine/threonine kinase 6; ser

CATALOG NO.: 45-014

HOST:

Goat

CLONALITY:

Polyclonal

INFORMATION:

Aurora Kinase Antibody.

SOURCE:

Aurora kinase antibody was raised against a synthetic peptide near the C-terminus of aurora kinase a.

PROTEIN ACCESSION NUMBER(S) :

NP_003591.2

SPECIES REACTIVITY:

Human

TESTED APPLICATION:

ELISA, Western Blot

APPLICATION:

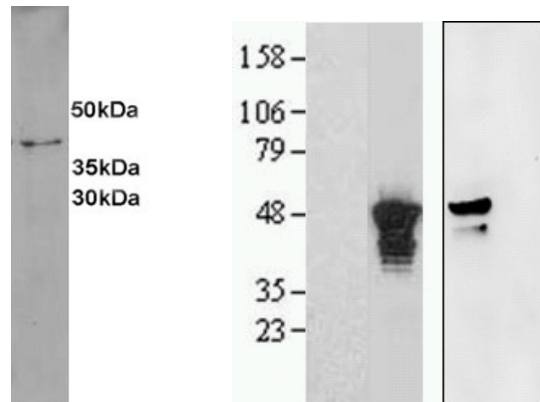
Peptide ELISA: antibody detection limit dilution 1:128,000.
Western blot: Approx 45kDa band seen in Jurkat and HeLa cell lysates. Recommended for use at 0.5-2 µg/ml

PURIFICATION:

Purified from goat serum by ammonium sulphate precipitation followed by antigen affinity chromatography using the immunizing peptide.

BUFFER:

Antibody is supplied as 0.1mg of purified antibody. 0.5 mg/ml in Tris saline, 0.02% sodium azide, pH7.3 with 0.5% bovine serum albumin.



Left: Western blot analysis of Aurora kinase in Jurkat lysate (RIPA buffer, 1.4E5 cells per lane). Detected by western blot using chemiluminescence using aurora kinase a antibody (0.5µg/ml). Right: HEK293 overexpressing Aurora kinase with C-terminal tag (DYKDDDDK) and probed with anti-DYKDDDDK in the left panel and with aurora kinase antibody in the right panel (vector-only transfection in first and fourth lanes).

STORAGE:

Aliquot and store at -20°C. Minimize freezing and thawing.

REFERENCE:

Zhou H, Kuang J, Zhong L, Kuo WL, Gray JW, Sahin A, Brinkley BR, Sen S. Tumour amplified kinase STK15/BTAK induces centrosome amplification, aneuploidy and transformation. Nat Genet 1998 Oct;20(2):189-93

USER NOTES:

When working with antibodies optimal dilutions/concentrations should be determined by the end user for each application. The information provided is a guideline for antibody use. As with all ProSci antibodies, this antibody is for research use only.