

## ADAM8 Antibody

*ADAM8; a disintegrin and metalloproteinase domain 8; MS2; CD156; CD156 MS2*

**CATALOG NO.: 45-003**

**HOST:**

Goat

**CLONALITY:**

Polyclonal

**INFORMATION:**

ADAM8 Antibody.

**SOURCE:**

ADAM8 antibody was raised against a synthetic peptide near the C-terminus of ADAM8.

**PROTEIN ACCESSION NUMBER(S) :**

NP\_001100

**SPECIES REACTIVITY:**

Human

**TESTED APPLICATION:**

ELISA, Western Blot

**APPLICATION:**

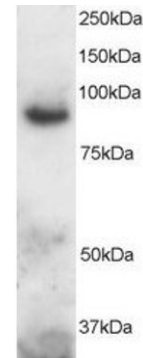
Western blot: Approx 90kDa band seen in Human Brain lysate. Recommended for use at 1-3µg/ml.

**PURIFICATION:**

Purified from goat serum by ammonium sulphate precipitation followed by antigen affinity chromatography using the immunizing peptide.

**BUFFER:**

Antibody is supplied as 0.1mg of purified antibody. 0.5 mg/ml in Tris saline, 0.02% sodium azide, pH7.3 with 0.5% bovine serum albumin.



Western blot analysis of ADAM8 in Human Brain lysate (RIPA buffer, 30µg total protein per lane) using ADAM8 antibody (2µg/ml).

**STORAGE:**

Aliquot and store at -20°C. Minimize freezing and thawing.

**REFERENCE:**

Yoshiyama K, Higuchi Y, Kataoka M, Matsuura K, Yamamoto S. CD156 (human ADAM8): expression, primary amino acid sequence, and gene location. Genomics. 1997 Apr 1;41(1):56-62.

**USER NOTES:**

When working with antibodies optimal dilutions/concentrations should be determined by the end user for each application. The information provided is a guideline for antibody use. As with all ProSci antibodies, this antibody is for research use only.