

## Precerebellin Antibody

*Precerebellin (CT): Cerebellin precursor, Cbln1*

**CATALOG NO.: 3587**

### BACKGROUND:

Precerebellin is the precursor of the brain-specific hexadecapeptide cerebellin, a protein with substantial similarity to the globular region of the B chain of complement component C1q (1). Cerebellin exerts neuromodulatory functions by directly stimulating norepinephrine release via the adenylate cyclase/pka-dependent signaling pathway (2); and indirectly enhances adrenocortical secretion in vivo, through a paracrine mechanism involving medullary catecholamine release (3). The active form of precerebellin is highly enriched in postsynaptic structures of cerebellar Purkinje cells in cartwheel neurons of the dorsal cochlear nucleus (4). Because precerebellin belongs to the C1q/tumor necrosis factor superfamily of secreted proteins and has similarity to adiponectin and CTRP3, it has been suggested that precerebellin possesses functions other than those already stated (5).

### SOURCE:

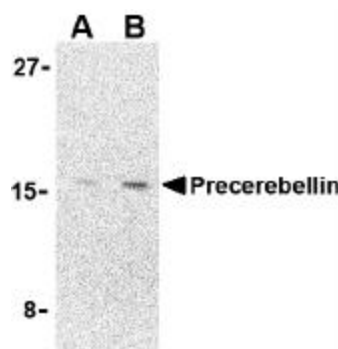
Rabbit polyclonal precerebellin antibody was raised against a 16 amino acid peptide from near the carboxy-terminus human precerebellin (Genbank accession No. P23435).

### APPLICATION:

Precerebellin antibody can be used for the detection of precerebellin by Western blot at 2 – 4 µg/ml. (Optimal dilution should be determined by user). 293 cell lysate can be used as positive control. Precerebellin antibody is human, mouse, and rat reactive. **This product is for research use only.**

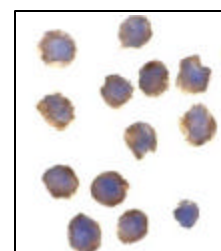
### STORAGE:

Precerebellin antibody is supplied as immunoaffinity purified IgG in PBS containing 0.02% sodium azide. Store at 4°C, stable for one year.



Western blot analysis of precerebellin in 293 cell lysate with precerebellin antibody at (A) 2 and (B) 4 µg/ml.

Immunocytochemistry of precerebellin in 3T3 cells with precerebellin antibody at 10 µg/ml.



### RELATED PRODUCTS:

Blocking peptide, Catalog No. **3587P**.  
293 Cell Lysate, Catalog No. **1210**.  
Precerebellin Antibody (IN), Catalog No. **3589**.  
Adiponectin Antibody (CT), Catalog No. **3551**.  
CTRP3 Antibody, Catalog No. **3565**.

### REFERENCES:

- Urade Y, Oberdick J, Molinar-Rode R, et al. Precerebellin is a cerebellum-specific protein with similarity to the globular component C1q B chain. *Proc. Natl. Acad. Sci. USA* 1991; 88:1069-73.
- Mazzocchi G, Andreis PG, De Caro R, et al. Cerebellin enhances in vitro secretory activity of human adrenal gland. *J. Clin. Endocrinol. Metab.* 1999; 84:632-5.
- Albertin G, Malendowicz LK, Macchi C, et al. Cerebellin stimulates the secretory activity of the rat adrenal gland: in vitro and in vivo studies. *Neuropeptides* 2000; 34:7-11.
- Shamji AF, Ngheim P, and Schreiber SL. Integration of growth factor and nutrient signaling: implications for cancer biology. *Proc. Natl. Acad. Sci. USA* 1985; 82:7145-8.
- Bao D, Pang Z, Morgan JI. The structure and proteolytic processing of Cbln1 complexes. *J. Neurochem.* 2005; 94:618-29. (RD0406)