

## UEV1A Antibody

*UEV1A: Ubiquitin-conjugating enzyme E2 variant 1 isoform A*

**CATALOG No.: 3375**

### BACKGROUND:

Ubiquitin-conjugating enzyme E2 (UEV1) was initially discovered as a protein similar in sequence and structure to the E2 ubiquitin-conjugating enzymes but lacking their enzymatic activity (1). There are at least two variants and multiple isoforms of UEV1. In particular, UEV1A (Ubiquitin-conjugating enzyme E2 variant 1 isoform A) has recently been shown to be an important component of the Toll-like receptor and IL-1R signaling pathway (reviewed in 2). Signals from these pathways are relayed by a number of downstream molecules such as MyD88 and tumor necrosis factor receptor associated factor (TRAF6), ultimately activating various kinases and transcription factors (2,3). UEV1A is part of a dimeric ubiquitin-conjugating enzyme complex also containing Ubc13 (ubiquitin-conjugating enzyme 13) that together with TRAF6 activates TAK1, a member of the mitogen-activated protein kinase kinase kinase family (4-6). The Ubc13-UEV1A complex also mediates the Lys-63 ubiquitination of TRAF-6, and this ubiquitination is essential for TAK1 activation (5).

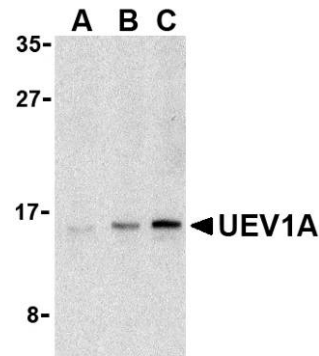
### SOURCE:

Rabbit polyclonal UEV1A antibody was raised against a peptide corresponding to 15 amino acids near the C-terminus of human UEV1A (GenBank accession no. NP\_954595).

### APPLICATION:

UEV1A antibody can be used for detection of UEV1A by Western blot at 1 to 2 µg/ml. (Optimal dilution should be determined by user.) UEV1A antibody is human, mouse, and rat reactive. Jurkat cell lysate can be used as a positive control. UEV1A antibody may also recognize other isoforms of UEV1A.

**For research use only.**



Western blot analysis of UEV1A in Jurkat cell lysates with UEV1A antibody at (A) 1, (B) 2, and (C) 4 µg/ml.

### STORAGE:

UEV1A antibody is supplied as ion exchange chromatography purified IgG in PBS containing 0.02% sodium azide. Store at 4°C, stable for one year. Azide free antibody is available.

### RELATED PRODUCTS:

Blocking peptide, Catalog No. **3375P**.

Human Small Intestine Cell Lysate, Catalog No. **1308**.

MyD88 Antibody (CT), Catalog No. **2127**.

UBC13 Antibody, Catalog No. **3373**.

TAK1 Antibody (NT), Catalog No. **3385**.

### REFERENCES:

- Sancho E, Vila MR, Sanchez-Pulido L, et al. Role of UEV-1, an inactive variant of the E2 ubiquitin-conjugating enzymes, in in vitro differentiation and cell cycle behavior of HT-29-M6 intestinal mucosecretory cells. *Mol. Cell Biol.* 1998; 18:576-89.
- Akira S and Takeda K. Toll-like receptor Signalling. *Nat. Rev. Immunol.* 2004; 4:499-511.
- Vogel SN, Fitzgerald KA, and Fenton MJ. TLRs: differential adapter utilization by toll-like receptors mediates TLR-specific patterns of gene expression. *Mol. Interv.* 2003; 3:466-77.
- Deng L, Wang C, Spencer E, et al. Activation of the IκappaB kinase complex by TRAF6 requires a dimeric ubiquitin-conjugating enzyme complex and a unique polyubiquitin chain. *Cell* 2000; 103:351-61.
- Wang C, Deng L, Hong M, et al. TAK1 is a ubiquitin-dependent kinase of MKK and IKK. *Nature* 2001; 412:346-51.
- Yamaguchi K, Shirakabe K, Shibuya H, et al. Identification of a member of the MAPKKK family as a potential mediator of TGF-β signal transduction. *Science* 1995; 270:2008-11.

