

TLR8 Antibody

TLR8 (IN): Toll-like receptor 8

CATALOG No.: 3281

BACKGROUND:

Toll-like receptors (TLRs) are signaling molecules that recognize different microbial products during infection and serve as an important link between the innate and adaptive immune responses (1-3). These proteins act through adaptor molecules such as MyD88 and TIRAP to activate various kinases and transcription factors (4,5). Like TLR7, TLR8 is localized to endosomal or lysosomal compartments (6) and stimulates the innate immune response after activation by guanosine- and uridine-rich single-stranded RNA (7). Human but not murine TLR8 confers responsiveness to the antiviral compound R-848 (8).

SOURCE:

Rabbit polyclonal TLR8 antibody was raised against a peptide corresponding to 16 amino acids near the middle of human TLR8 (GenBank accession no. NP_619542).

APPLICATION:

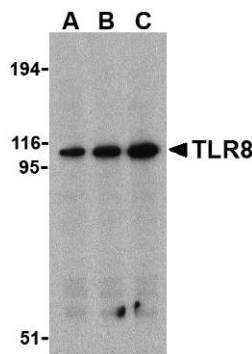
TLR8 antibody can be used for detection of TLR8 by Western blot at 0.5 to 2 µg/ml. (Optimal dilution should be determined by user.) TLR8 antibody is human and mouse reactive. **For research use only.**

STORAGE:

Grik5 antibody is supplied as immunoaffinity purified IgG in PBS containing 0.02% sodium azide. Store at 4°C, stable for one year. Azide free antibody is available.

RELATED PRODUCTS:

Blocking peptide, Catalog No. **3281P**.
Daudi Cell Lysate, Catalog No. **1224**.
MyD88 Antibody (CT), Catalog No. **2127**.
TIRAP Antibody (IN), Catalog No. **3255**.
TLR7 Antibody (IN), Catalog No. **3269**.



Western blot analysis of TLR8 in Daudi cell lysates with TLR8 antibody at (A) 0.5, (B) 1, and (C) 2 µg/ml.

Immunocytochemistry of TLR8 in Daudi cells with TLR8 antibody at 2 µg/ml.



REFERENCES:

1. Vogel SN, Fitzgerald KA, and Fenton MJ. TLRs: differential adapter utilization by toll-like receptors mediates TLR-specific patterns of gene expression. *Mol. Interv.* 2003; 3:466-77.
2. Takeda K, Kaisho T, and Akira S. Toll-like receptors. *Annu. Rev. Immunol.* 2003; 21:335-76.
3. Janeway CA Jr. and Medzhitov R. Innate immune recognition. *Annu. Rev. Immunol.* 2002; 20:197-216.
4. O'Neill LAJ, Fitzgerald FA, and Bowie AG. The Toll-IL-1 receptor adaptor family grows to five members. *Trends in Imm.* 2003; 24:286-9.
5. McGettrick AF and O'Neill LAJ. The expanding family of MyD88-like adaptors in Toll-like receptor signal transduction. *Mol Imm.* 2004; 41:577-82.
6. Heil F, Ahmad-Nejad P, Hemmi H, et al. The Toll-like receptor 7 (TLR7)-specific stimulus loxoribine uncovers a strong relationship within the TLR7, 8 and 9 subfamily. *Eur. J. Immunol.* 2003; 33:2987-2997.
7. Heil F, Hemmi H, Hochrein H, et al. Species-specific recognition of single-stranded RNA via Toll-like receptor 7 and 8. *Science* 2004; 303:1526-9.
8. Jurk M, Heil F, Vollmer J, et al. Human TLR7 or TLR8 independently confer responsiveness to the antiviral compound R-848. *Nat. Immunol.* 2002; 3:499. (1005)

