

## TLR10 Antibody

*TLR10 (IN): Toll-like receptor 10*

**CATALOG No.: 3275**

### BACKGROUND:

Toll-like receptors (TLRs) are signaling molecules that recognize different microbial products during infection and serve as an important link between the innate and adaptive immune responses (1-3). These proteins act through adaptor molecules such as MyD88 and TIRAP to activate various kinases and transcription factors (4,5). TLR10 is highly homologous to TLRs 1 and 6 and is most highly expressed in lymphoid tissues (6). Most recently genetic variation in TLR10 has been associated with contributing to asthma risk (7). It should be noted that TLR10 exists in mice only as a pseudogene (8).

### SOURCE:

Rabbit polyclonal TLR10 antibody was raised against a peptide corresponding to 14 amino acids near the middle of human TLR10 (GenBank accession no. AAQ88667).

### APPLICATION:

TLR10 antibody can be used for detection of TLR10 by Western blot at 0.5 to 1 µg/ml. (Optimal dilution should be determined by user.) Despite its predicted size of ~90 kDa, a band corresponding to TLR10 is observed at ~75 kDa in immunoblot assays. TLR10 antibody is human specific.

**For research use only.**

### STORAGE:

TLR10 antibody is supplied as ion exchange chromatography purified IgG in PBS containing 0.02% sodium azide. Store at 4°C, stable for one year. Azide free antibody is available.

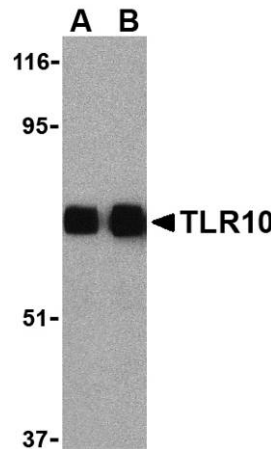
### RELATED PRODUCTS:

Blocking peptide, Catalog No. **3275P**

Human Lymph Node Lysate, Catalog No. **1369**

MyD88 Antibody (CT), Catalog No. **2127**

TIRAP Antibody (IN), Catalog No. **3155**



Western blot analysis of TLR10 in human lymph node cell lysates with TLR10 antibody at (A) 0.5 and (B) 1 µg/ml.

### REFERENCES:

1. Vogel SN, Fitzgerald KA, and Fenton MJ. TLRs: differential adapter utilization by toll-like receptors mediates TLR-specific patterns of gene expression. *Mol. Interv.* 2003; 3:466-77.
2. Takeda K, Kaisho T, and Akira S. Toll-like receptors. *Annu. Rev. Immunol.* 2003; 21:335-76.
3. Janeway CA Jr. and Medzhitov R. Innate immune recognition. *Annu. Rev. Immunol.* 2002; 20:197-216.
4. O'Neill LAJ, Fitzgerald FA, and Bowie AG. The Toll-IL-1 receptor adaptor family grows to five members. *Trends in Imm.* 2003; 24:286-9.
5. McGettrick AF and O'Neill LAJ. The expanding family of MyD88-like adaptors in Toll-like receptor signal transduction. *Mol Imm.* 2004; 41:577-82.
6. Chuang T and Ulevitch RJ. Identification of hTLR10: a novel Toll-like receptor preferentially expressed in immune cells. *Biochim. Biophys. Acta* 2001; 1518:157-61.
7. Lazarus R, Rabvy BA, Lange C, et al. TOLL-like receptor 10 genetic variation is associated with asthma in two independent samples. *Am. J. Respir. Crit. Care Med.* 2004; 170:594-600.
8. Beutler B and Rehli M. Evolution of the TIR, tolls and TLRs: functional inferences from computational biology. *Curr Top Microbiol. Immunol.* 2002; 270:1-21.

