

## AMACR Monoclonal Antibody

*alpha-methylacyl-CoA racemase*

**CATALOG NO.:** 32-107

### **DESCRIPTION:**

AMACR (alpha-methylacyl-CoA racemase) has been recently described as prostate cancer-specific gene that encodes a protein involved in the beta-oxidation of branched chain fatty acids. Expression of AMACR protein is found in prostatic adenocarcinoma but not in benign prostatic tissue. It stains premalignant lesions of prostate: high-grade prostatic intraepithelial neoplasia (PIN) and atypical adenomatous hyperplasia. AMACR can be used as a positive marker for PIN. Defects in AMACR are the cause of congenital bile acid synthesis defect type 4 (CBAS4); also known as cholestasis, intrahepatic, with defective conversion of trihydroxycoprostanic acid to cholic acid or trihydroxycoprostanic acid in bile. Clinical features include neonatal jaundice, intrahepatic cholestasis, bile duct deficiency and absence of cholic acid from bile.

### **CLONALITY:**

This is a monoclonal antibody. Clone 2A10F3.

### **ISOTYPE:**

IgG2b

### **HOST:**

AMACR monoclonal antibody was raised in mouse. Please use anti-mouse secondary antibodies.

### **IMMUNOGEN:**

Purified truncated recombinant AMACR-His fusion protein expressed in E. Coli strain BL21 (DE3).

### **PURIFICATION DETAILS:**

Ascitic fluid containing 0.03% sodium azide.

### **TESTED APPLICATION:**

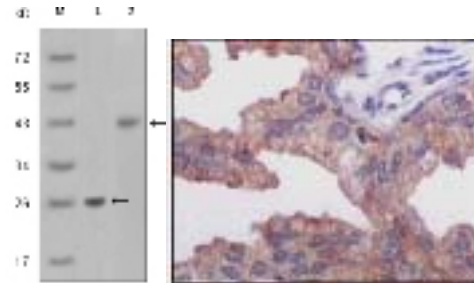
WB,E,IHC

### **APPLICATION DETAILS:**

Western Blot: 1: 500- 1: 2,000 IHC(P): 1: 500- 1: 2,000 ELISA: Propose dilution 1: 10,000. Determining optimal working dilutions by titration test.

### **STORAGE:**

AMACR monoclonal antibody can be stored at -20°C, stable for one year. As with all antibodies care should be taken to avoid repeated freeze thaw cycles. Antibodies should not be exposed to prolonged high temperatures.



Western blot analysis using AMACR monoclonal antibody against truncated AMACR-His recombinant protein and Jurkat cell lysate. Immunohistochemical analysis of paraffin-embedded human prostate adenocarcinoma tissue showing cytoplasmic location using AMACR antibody with DAB staining.

### **USER NOTES:**

Optimal dilutions/concentrations should be determined by the end user. The information provided is a guideline for product use. **This product is for research use only.**