

4E-BP1 Monoclonal Antibody

eukaryotic translation Initiation Factor 4E Binding Protein 1

CATALOG NO.: 32-101

DESCRIPTION:

4E-BP1 (eukaryotic translation Initiation Factor 4E Binding Protein 1), also called ELF4EBP1/BP-1/PHAS-I, which is located on chromosome 8p12, with 118-amino acid protein (about 13kDa). Binding of eIF4EBP1 to eIF4E is reversible and is dependent on the phosphorylation status of eIF4EBP1. Non phosphorylated eIF4EBP1 will bind strongly to eIF4E while (24kDa), the phosphorylated form will not. Akt, TOR, MAP kinase, S6 kinase, and Cdc2 are known kinases capable of inactivating eIF4EBP1 binding to eIF4E by phosphorylating either threonines 35, 45, 69 or serine 64. Although, not all phosphorylation events equally block the eIF4EBP1-eIF4E interaction.

CLONALITY:

This is a monoclonal antibody. Clone 9E12D9.

ISOTYPE:

IgG1

HOST:

4E-BP1 monoclonal antibody was raised in mouse. Please use anti-mouse secondary antibodies.

IMMUNOGEN:

Ni-NTA purified truncated recombinant 4EBP1 expressed in E. Coli strain BL21 (DE3).

PURIFICATION DETAILS:

Antibody is purified by protein A affinity chromatography.

TESTED APPLICATION:

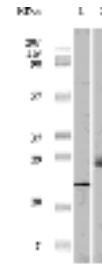
WB, E

APPLICATION DETAILS:

Western Blot: 1: 500- 1: 1,000. ELISA: Propose dilution 1: 10,000. Determining optimal working dilutions by titration test.

STORAGE:

4E-BP1 monoclonal antibody can be stored at -20°C, stable for one year. As with all antibodies care should be taken to avoid repeated freeze thaw cycles. Antibodies should not be exposed to prolonged high temperatures.



Western blot analysis using 4E-BP1 monoclonal antibody against truncated 4E-BP1 recombinant protein and A431 cell lysate.

USER NOTES:

Optimal dilutions/concentrations should be determined by the end user. The information provided is a guideline for product use. **This product is for research use only.**