

CARD8 Antibody

CARD8 (CT): CARDINAL, TUCAN

CATALOG No.: 3187

BACKGROUND:

Apoptosis is related to many diseases and development. Cell death signals are transduced by death domain (DD), death effector domain (DED), and caspase recruitment domain (CARD) containing molecules. CARD containing proteins include some caspases, Apaf-1, CARD4, IAPs, RICK, ARC, RAIDD, BCL-10, and ASC. A novel CARD-containing protein was recently identified and designated CARD8. This protein interacts with DRAL, a p53-responsive protein implicated in the induction of apoptosis (1,2), and caspase-1 and its related proteins ICEBERG and pseudo-ICE (3). Although there are conflicting reports on whether CARD8 acts a pro- or anti-apoptotic protein (2,4), it has been suggested that it functions as an adaptor molecule regulating caspase-1 and NF- κ B activation.

SOURCE:

Rabbit polyclonal CARD8 antibody was raised against a synthetic peptide corresponding to amino acids at the C-terminus of human CARD8 (Genbank accession No. AAG50014).

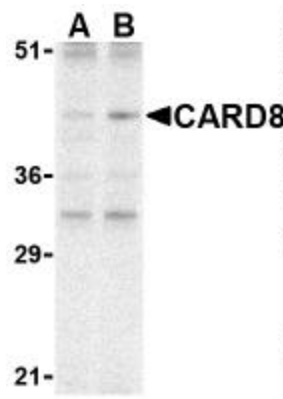
APPLICATION:

CARD8 antibody can be used for detection of CARD8 by Western blot at 2 μ g/ml. (Optimal dilution should be determined by user.) K562 cell lysate can be used as a positive control and a band at approximately 45 kDa can be detected. CARD8 antibody is human and mouse reactive.

For research use only.

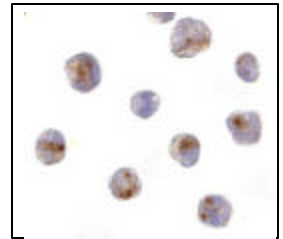
STORAGE:

CARD8 antibody is supplied as immunoaffinity purified IgG, in PBS containing 0.02% sodium azide. Store at 4°C, stable for one year.



Western blot analysis of CARD8 expression in K562 cell lysate with CARD8 antibody at (A) 2 and (B) 4 μ g/ml.

Immunocytochemistry of CARD8 in K562 cells with CARD8 antibody at 10 μ g/ml.



RELATED PRODUCTS:

Blocking peptide, Catalog No. **3187P**.
K562 Cell Lysate, Catalog No. **1204**.
CARD9 Antibody, Catalog No. **2515**.
CARD10 Antibody, Catalog No. **3013**.
Apaf-1 Antibody (NT), Catalog No. **2013**.
Caspase 1 Antibody (CT), Catalog No. **3459**.

REFERENCES:

1. Scholl FA, McLoughlin P, Ehler E, et al. DRAL is a p53-responsive gene whose four and a half LIM domain protein product induces apoptosis. *J. Cell Biol.* 2000; 151:495-506.
2. Stil R, Leonardi A, Formisano L, et al. TUCAN/CARDINAL and DRAL participate in a common pathway for modulation of NF- κ B activation. *FEBS* 2002; 521:165-9.
3. Razmara M, Srinivasula SM, Wang L, et al. CARD-8 protein, a new CARD family member that regulates caspase-1 activation and apoptosis. *J. Biol. Chem.* 2002; 277:13952-8.
4. Pathan N, Marusawa H, Krajewska M, et al. TUCAN, an antiapoptotic caspase-associated recruitment domain family protein overexpressed in cancer. *J. Biol. Chem.* 2001; 276:32220-9. (06-01D)