

## ILP-2 Antibody

*ILP-2: Inhibitor of apoptosis-like protein 2, IAP-like protein 2*

**CATALOG No.: 3017**

### BACKGROUND:

Apoptosis, or programmed cell death, is related to many diseases, such as cancer. Apoptosis is triggered by a variety of stimuli including members in the TNF family and prevented by the inhibitor of apoptosis (IAP) proteins. IAP proteins form a conserved gene family including IAP, XIAP/ILP-1/MIHA, and Livin/KIAP that bind to and inhibits specific proteases. A novel member in the IAP protein family was recently identified and designated ILP-2 for IAP-like protein-2 (1). ILP-2 has high homology to ILP-1, but is encoded by a distinct gene that is solely expressed in testis of tested normal human tissues (1). ILP-2, unlike ILP-1, has no inhibitory effect on Fas and TNF induced apoptosis, but potently inhibits apoptosis induced by overexpression of Bax or by coexpression of caspase-9 with Apaf-1. ILP-2 interacts with the processed caspase-9. These results suggest that ILP-2 is a novel IAP family member with restricted specificity for caspase-9.

### SOURCE:

Rabbit polyclonal ILP-2 antibody was raised with against a synthetic peptide corresponding to amino acids near the amino terminus of human ILP-2 (Genbank accession No. Q96P09).

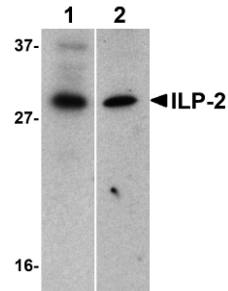
### APPLICATION:

ILP-2 antibody can be used for detection of ILP-2 by Western blot at 1 – 2 µg/ml. (Optimal dilution should be determined by user.) HepG2 or MOLT4 cell lysate can be used as a positive control and a band at approximately 33 kDa can be detected. ILP-2 antibody is human specific.

**For research use only.**

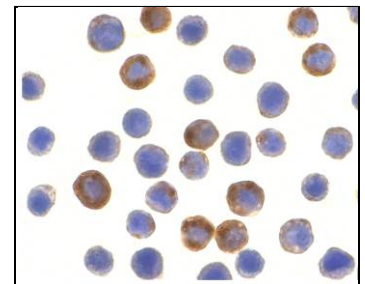
### STORAGE:

ILP-2 antibody is supplied as immunoaffinity chromatography purified IgG in PBS containing 0.02% sodium azide. Store at 4°C, stable for one year.



Western blot analysis of ILP-2 expression in human HepG2 (lane 1) and MOLT4 (lane 2) cell lysates with ILP-2 antibody at 1 µg/ml.

Immunocytochemistry of ILP-2 in HepG2 cells with ILP-2 antibody at 10 µg/ml.



### RELATED PRODUCTS:

Blocking peptide, Catalog No. **3017P**.  
HepG2 Cell Lysate, Catalog No. **1211**.  
Apaf-1 Antibody (NT), Catalog No. **2013**.  
Caspase 9 Antibody (IN1), Catalog No. **2071**.  
Livin Antibody, Catalog No. **2505**.  
cIAP Antibody (CT), Catalog No. **3325**.  
XIAP Antibody (CT), Catalog No. **3331**.

### REFERENCES:

1. Richter BW, Mir SS, Eiben LJ, et al. Molecular cloning of ILP-2, a novel member of the inhibitor of apoptosis protein family. *Mol. Cell Biol.* 2001; 21:4292-301. (RD0406)