

EEA1 Antibody

CATALOG NO.: 30-002

SPECIES REACTIVITY: H

ACCESSION NUMBER: NP_003557

BACKGROUND:

EEA1 is involved in neuronal synaptic vesicle function and axonal transport and growth. EEA1 may undergo calcium-dependent conformational changes that are required for binding to SNAP-25.

SOURCE:

Polyclonal antibody produced in rabbits immunized with a synthetic peptide corresponding to a region of Human EEA1.

PURIFICATION:

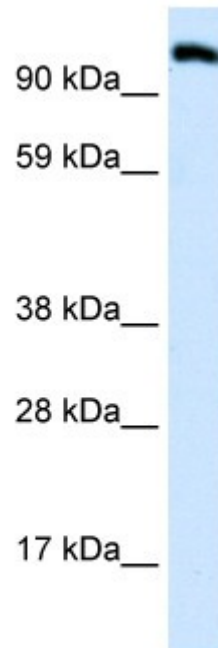
Rabbit Ig G is purified by peptide affinity chromatography method.

APPLICATION:

EEA1 antibody can be used for Western blot at a suggested dilution at 0.06 μ g/ml in 5% skim milk / PBS buffer, and HRP conjugated anti-Rabbit IgG should be diluted in 1: 50,000 - 100,000 as secondary antibody. Optimal dilutions/concentrations should be determined by the end user. The information provided is a guideline for product use. This antibody is for research use only.

STORAGE:

Antibody is lyophilized from PBS buffer with 2% sucrose. Add 50 μ l of distilled water. Final antibody concentration is 1 mg/ml. For longer periods of storage, store at -20°C. Avoid repeat freeze-thaw cycles.



Western blot analysis of EEA1 expression in placenta tissue lysate using EEA1 antibody 0.06 μ g/ml.