

## IL-21R Antibody

*IL-21R (ED): Interleukin-21 receptor*

**CATALOG NO.: 2469**

### BACKGROUND:

A novel cytokine related to IL-2 and IL-15 was recently identified and designated IL-21 (1). The receptor for IL-21 (IL-21R) is a new member of the class I cytokine receptor family (1,2). IL-21R forms a complex with the common cytokine receptor  $\gamma$  chain,  $\gamma_c$ , and mediates IL-21 signaling (3,4). Both IL-21R and the  $\gamma_c$  are necessary for the IL-21 function. IL-21 and its receptor activate JAK-STAT signaling pathway. IL-21R is expressed in spleen, thymus, natural killer (NK), T and B cell lines. IL-21 plays a role in the proliferation and maturation of NK, B and T cell populations.

### SOURCE:

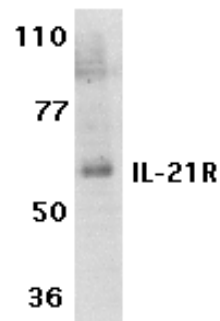
Rabbit polyclonal IL-21R antibody was raised against a synthetic peptide containing 15 amino acids in the extracellular domain of human IL-21R precursor .

### APPLICATION:

IL-21R antibody can be used for detection of IL-21R by Western blot at 0.5 to 1  $\mu$ g/ml. (Optimal dilution should be determined by user.) Human Raji and A431 cell lysates can be used as positive control and an approximately 60 kDa band can be detected. IL-21R antibody is human and rat reactive. **For research use only.**

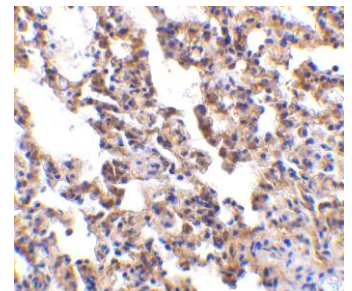
### STORAGE:

IL-21R antibody is supplied as immunoaffinity purified IgG in PBS containing 0.02% sodium azide. Store at 4°C, stable for one year.



Western blot analysis of IL-21R expression in Raji cell lysate with IL-21R antibody at 1  $\mu$ g/ml.

Immunohistochemistry of IL-21R in rat lung with IL-21R antibody at 10  $\mu$ g/ml.



### RELATED PRODUCTS:

Blocking peptide, Catalog No. **2469P**.  
Raji Cell Lysate, Catalog No. **1207**.  
IL-21R Antibody (NT), Catalog No. **2471**.

### REFERENCES:

1. Parrish-Novak J, Dillon SR, Nelson A, et al. Interleukin 21 and its receptor are involved in NK cell expansion and regulation of lymphocyte function. *Nature* 2000; 408:57-63.
2. Ozaki K, Kikly K, Michalovich D, et al. Cloning of a type I cytokine receptor most related to the IL-2 receptor beta chain. *Proc. Natl. Acad. Sci. USA*. 2000; 97:11439-44.
3. Asao H, Okuyama C, Kumaki S, et al. The common gamma-chain is an indispensable subunit of the IL-21 receptor complex. *J Immunol*. 2001; 167:1-5.
4. Vosshenrich CA, Di Santo JP. Cytokines: IL-21 joins the gamma(c)-dependent network? *Curr. Biol*. 2001; 11:R175-7. (06-01D)