

Caspase-13 Antibody

Caspase-13: Casp13, evolutionarily related IL-1 β converting enzyme, ERICE

CATALOG NO.: 2245

BACKGROUND:

Apoptosis is related to many diseases and induced by a family of cell death receptors and their ligands. Cell death is finally caused by members of the caspase family of proteases and caspase activated DNases. A novel member in the caspase family was recently identified and designated ERICE (for Evolutionarily Related Interleukin-1 β Converting Enzyme) and caspase-13 (1). Caspase-13 belongs to the ICE subfamily of caspases. Overexpression of caspase-13 induces apoptosis. Caspase-13 was activated by caspase-8, which is a key enzyme in death receptor induced apoptosis. Caspase-13 is expressed in a variety of human tissues and cell lines (1).

SOURCE:

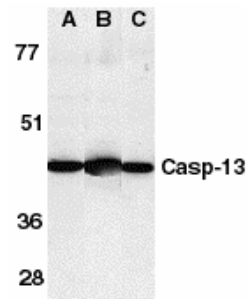
Rabbit polyclonal caspase-13 antibody was raised against a peptide corresponding to amino near the amino terminus of human caspase-13 (1). (GenBank Accession No. O75601).

APPLICATION:

Caspase-13 antibody can be used for detection of Caspase-13 by Western blot at 0.5 to 1 μ g/ml. (Optimal dilution should be determined by user.) HL60 cell lysate can be used as positive control and a 43 kDa band should be detected. Caspase-13 antibody is human, mouse and rat reactive. **For research use only.**

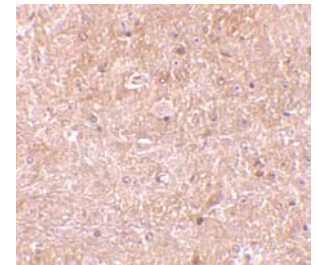
STORAGE:

Caspase-13 antibody is supplied as ion exchange chromatography purified IgG, in PBS containing 0.02% sodium azide. Store at 4°C, stable for one year.



Western blot analysis of caspase-13 in (A) HL60 cell lysate, (B) mouse brain and (C) rat brain tissue lysates with Caspase-13 antibody at 1 μ g/ml.

Immunohistochemistry of Caspase-13 in mouse brain tissue with Caspase-13 antibody at 10 μ g/ml.



RELATED PRODUCTS:

Blocking peptide, Catalog No. **2245P**.
HL60 Cell Lysate, Catalog No. **1209**.
Caspase-8 Antibody (CT), Catalog No. **3473**.

REFERENCES:

1. Humke EW, Ni J, Dixit VM. ERICE, a novel FLICE-activatable caspase. *J. Biol. Chem.* 1998; 273:15702-7. (06-01D)