

Bcl10 Antibody

Bcl10 (NT): CIPER, mE10, CARMEN, CLAP

CATALOG NO.: 2161

BACKGROUND:

Apoptosis is related to many diseases including cancer. Cell death signals are transduced by death domain (DD) and caspase recruitment domain (CARD) containing molecules and a caspase family of proteases. CARD containing cell death regulators include ARC, RAIDD, Apaf-1, caspase-9, and caspase-2. A novel CARD containing protein was recently identified by several groups and designated *Bcl10*, *CIPER*, *mE10*, *CARMEN*, *CLAP* (1-6). *Bcl10* is a cellular homolog of the equine herpesvirus-2 E-10 gene. Overexpression of *Bcl10* induces JNK, p38, and NF- κ B activation (1,2,4,6). *Bcl10* interacts with caspase-9 and enhances pro-caspase-9 processing (3) and induces apoptosis through caspase-9 activation (3,6). *Bcl10* exhibits a variety of mutations in MALT lymphomas and in B and T cell lineage lymphomas indicating that it may be commonly involved in the pathogenesis of human malignancy (1,5). *Bcl10* is expressed in many human and murine tissues and cell lines (2-6).

SOURCE:

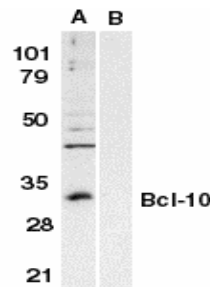
Rabbit polyclonal Bcl10 antibody was raised against a peptide corresponding to amino acids near the amino terminus of human Bcl10.

APPLICATION:

Bcl10 antibody can be used for detection of BCL10 by Western blot at 1 μ g/ml. (Optimal dilution should be determined by user.) Raji whole cell lysate can be used as positive control and an approximately 31 kDa band can be detected. **For research use only.**

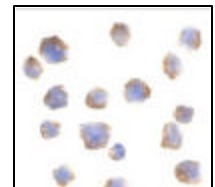
STORAGE:

Bcl10 antibody is supplied as immunoaffinity chromatography purified IgG, in PBS containing 0.02% sodium azide. Store at 4°C, stable for one year.



Western blot analysis of Bcl-10 in Raji whole cell lysate in the absence (A) or presence (B) of peptide (2161P) with Bcl10 antibody at 1 μ g/ml.

Immunocytochemistry of Bcl10 in Raji cells with Bcl10 antibody at 1 μ g/ml.



RELATED PRODUCT:

Blocking peptide, Catalog No. **2161P**.
Raji Cell Lysate, Catalog No. **1207**.
Apaf-1 Antibody (NT), Catalog No. **2013**.
ARC Antibody (CT), Catalog No. **2081**.
Caspase-9 Antibody (IN2), Catalog No. **2073**.

REFERENCES:

- Willis TG, Jadayel DM, Du MQ, et al. Bcl10 is involved in t(1;14)(p22;q32) of MALT B cell lymphoma and mutated in multiple tumor types. *Cell* 1999; 96:35-45.
- Koseki T, Inohara N, Chen S, et al. CIPER, a novel NF kappaB-activating protein containing a caspase recruitment domain with homology to Herpesvirus-2 protein E10. *J. Biol. Chem.* 1999; 274:9955-61.
- Yan M, Lee J, Schilbach S, et al. mE10, a novel caspase recruitment domain-containing proapoptotic molecule. *J. Biol. Chem.* 1999; 274:10287-92.
- Thome M, Martinon F, Hofmann K, et al. Equine herpesvirus-2 E10 gene product, but not its cellular homologue, activates NF-kappaB transcription factor and c-Jun N-terminal kinase. *J. Biol. Chem.* 1999; 274:9962-8.
- Zhang Q, Siebert R, Yan M, Hinzmann B, et al. Inactivating mutations and overexpression of BCL10, a caspase recruitment domain-containing gene, in MALT lymphoma with t(1;14)(p22;q32). *Nat. Genet.* 1999; 22:63-8.
- Srinivasula SM, Ahmad M, Lin JH, et al. CLAP, a novel caspase recruitment domain-containing protein in the tumor necrosis factor receptor pathway, regulates NF-kappaB activation and apoptosis. *J. Biol. Chem.* 1999; 274:17946-54. (RD0406)