

CCR5 Antibody

CCR5 (NT)

CATALOG NO.: 1112

BACKGROUND:

Human immunodeficiency virus (HIV) and related virus require coreceptors, in addition to CD4, to infect target cells. Some G protein-coupled receptors including CCR5, CXCR4, CCR3, CCR2b and CCR8 in the chemokine receptor family, and four new human molecules GPR15, STRL33, GPR1 and V28 were recently identified as HIV coreceptors (1,2). Among them, CCR5 (CC-CKR-5) is a principal coreceptor for macrophage- and dual-tropic HIV-1 strains fusion and entry of human white blood cells (3,4). CCR5 is required for the infection by HIV-1, HIV-2, and SIV (1,2). The β -chemokines RANTES, MIP-1 α and MIP-1 β are the ligands for CCR5 and prevent infection by M-tropic HIV-1 (3-5). CXC5 associates with the surface CD4-gp120 of HIV complex and leads to membrane fusion and virus entry of target cells (6,7). The amino-terminal domain and the extracellular loops of CCR5 serve as HIV binding sites (8,9). CCR5 messenger RNA is expressed in lymphoid organs and monocytes.

SOURCE:

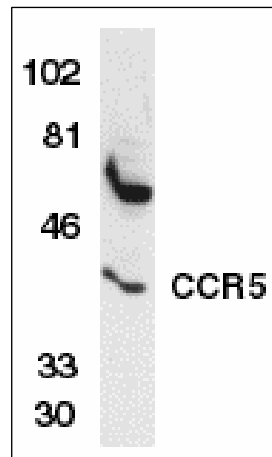
Rabbit polyclonal CCR5 antibody was raised against a peptide corresponding to amino acids 6 to 20 of human CCR5 (10,11).

APPLICATION:

CCR5 antibody can be used for Western blot at 1:1000 to 1:2000 dilution. THP-1 whole cell lysate can be used as positive control and an approximate 40 kDa band can be detected. CCR5 antibody can also detect CCR5 by immunohistochemistry at 20 μ g/ml. (Optimal dilution should be determined by user.) **For research use only.**

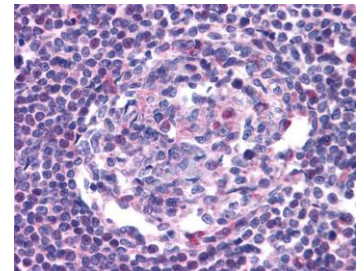
STORAGE:

CCR5 antibody is supplied as purified IgG, in PBS containing 0.02% sodium azide. Store at 4°C, stable for one year.



Western blot analysis of CCR5 in THP-1 whole cell lysate with CCR5 antibody at 1:1000 dilution.

Immunohistochemistry of CCR5 in human lymph node tissue with CCR5 antibody at 20 μ g/ml.



RELATED PRODUCTS:

Blocking peptide, Catalog No. **1112P**

THP-1 Lysate, Catalog No. **1208**

Human Lymph Node Tissue Slide, Catalog No. **11-523**

REFERENCES:

1. Dimitrov, DS. *Cell* 1997;91:721-30
2. Littman, DR. *Cell* 1998;93:677-80
3. Deng, H, et al. *Nature* 1996;381:661-6
4. Dragic, T, et al. *Nature* 1996;381:667-73
5. Coochi, F. et al. *Science* 1995;270:1811-5.
6. Wu, L. et al. *Nature* 1996;384:179-83

12170 Flint Place
Poway, CA 92064
www.prosci-inc.com



Toll Free: 888-513-9525
Tel: 858-513-2638
Fax: 858-513-2692
techsupport@prosci-inc.com

7. Trkola , A. et al. *Nature* 1996;384:184-7
8. Doranz, BJ. et al. *J Virol* 1997;71:6305-14
9. Dragic, T, et al. *J Virol* 1998;72:279-85
10. Raport, CJ, et al. *J Biol Chem* 1996;271:17161-6
11. Combadiere, C. et al. *J Leuk Biol* 1996;60:147-52