



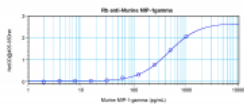
ProSci Incorporated
12170 Flint Place
Poway, CA 92064

Toll Free: +1 (888) 513 9525
Local: +1 (858) 513 2638
Fax: +1 (858) 513 2692

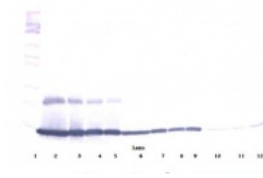
techsupport@prosci-inc.com
prosci-inc.com

MIP-1gamma Antibody

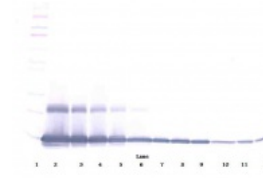
CATALOG NUMBER: XP-5236



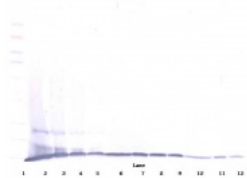
To detect Murine MIP-1-gamma by sandwich ELISA (using 100 ul/well antibody solution) a concentration of 0.5 - 2.0 ug/ml of this antibody is required. This antigen affinity purified antibody, in conjunction with ProSci's Biotinylated Anti-Murine MIP-1-gamma (XP-5236Bt) as a detection antibody, allows the detection of at least 0.2 - 0.4 ng/well of recombinant Murine MIP-1-gamma.



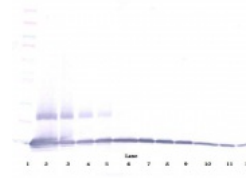
To detect Murine MIP-1-gamma by Western Blot analysis this antibody can be used at a concentration of 0.1-0.2 ug/ml. When used in conjunction with compatible secondary reagents, the detection limit for recombinant Murine MIP-1-gamma is 1.5-3.0 ng/lane, under either reducing or non-reducing conditions.



To detect Murine MIP-1-gamma by Western Blot analysis this antibody can be used at a concentration of 0.1-0.2 ug/ml. When used in conjunction with compatible secondary reagents, the detection limit for recombinant Murine MIP-1-gamma is 1.5-3.0 ng/lane, under either reducing or non-reducing conditions.



To detect Murine MIP-1-gamma by Western Blot analysis this antibody can be used at a concentration of 0.1-0.2 ug/ml. When used in conjunction with compatible secondary reagents, the detection limit for recombinant Murine MIP-1-gamma is 1.5-3.0 ng/lane, under either reducing or non-reducing conditions.



To detect Murine MIP-1-gamma by Western Blot analysis this antibody can be used at a concentration of 0.1-0.2 ug/ml. When used in conjunction with compatible secondary reagents, the detection limit for recombinant Murine MIP-1-gamma is 1.5-3.0 ng/lane, under either reducing or non-reducing conditions.

Specifications

SPECIES REACTIVITY:	Mouse
TESTED APPLICATIONS:	ELISA, WB
APPLICATIONS:	ELISA:

To detect mMIP-1-gamma by direct ELISA (using 100 uL/well antibody solution) a concentration of at least 0.5

ug/mL of this antibody is required. This antigen affinity purified antibody, in conjunction with compatible secondary reagents, allows the detection of 0.2 - 0.4 ng/well of recombinant mMIP-1-gamma.

Sandwich:

To detect mMIP-1 γ by sandwich ELISA (using 100 uL/well antibody solution) a concentration of 0.5 - 2.0 ug/mL of this antibody is required. This antigen affinity purified antibody, in conjunction with our Biotinylated Anti-Murine MIP-1 γ (XP-5236Bt) as a detection antibody, allows the detection of at least 0.2 - 0.4 ng/well of recombinant mMIP-1 γ .

Western Blot:

To detect mMIP-1-gamma by Western Blot analysis this antibody can be used at a concentration of 0.1 - 0.2 ug/mL. Used in conjunction with compatible secondary reagents the detection limit for recombinant mMIP-1-gamma is 1.5 - 3.0 ng/lane, under either reducing or non-reducing conditions.

USER NOTE:	Centrifuge vial prior to opening.
IMMUNOGEN:	Produced from sera of rabbits pre-immunized with highly pure (>98%) recombinant mMIP-1-gamma (murine Macrophage Inflammatory Protein-1-gamma).
HOST SPECIES:	Rabbit

Properties

PURIFICATION:	Anti-mMIP-1-gamma specific antibody was purified by affinity chromatography employing immobilized mMIP-1-gamma matrix.
PHYSICAL STATE:	Lyophilized
STORAGE CONDITIONS:	MIP-1-gamma antibody is stable for at least 2 years from date of receipt at -20°C. The reconstituted antibody is stable for at least two weeks at 2-8°C. Frozen aliquots are stable for at least 6 months when stored at -20°C. Avoid repeated freeze-thaw cycles.
CLONALITY:	Polyclonal
CONJUGATE:	Unconjugated

Additional Info

ALTERNATE NAMES:	CCF18, MRP-2, Scya9, Scya10, Mrp2, C-C motif chemokine 9, CCF18, MIP-1-gamma
ACCESSION NO.:	P51670
PROTEIN GI NO.:	1709026
OFFICIAL SYMBOL:	Ccl9
GENE ID:	20308

Background

FOR RESEARCH USE ONLY

October 25, 2017