

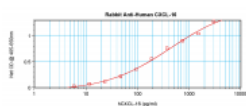
ProSci Incorporated
12170 Flint Place
Poway, CA 92064

Toll Free: +1 (888) 513 9525
Local: +1 (858) 513 2638
Fax: +1 (858) 513 2692

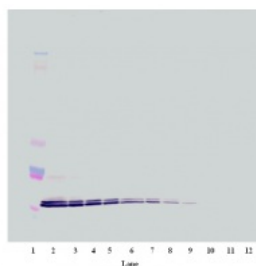
techsupport@prosci-inc.com
prosci-inc.com

CXCL16 Antibody

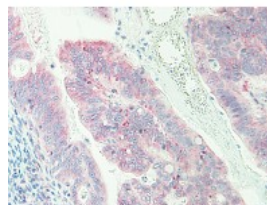
CATALOG NUMBER: XP-5117



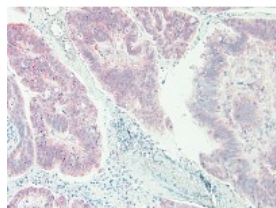
To detect hCXCL16 by sandwich ELISA (using 100 μ l/well antibody solution) a concentration of 0.5 - 2.0 μ g/ml of this antibody is required. This antigen affinity purified antibody, in conjunction with ProSci's Biotinylated Anti-Human CXCL16 (XP-5117Bt) as a detection antibody, allows the detection of at least 0.2 - 0.4 ng/well of recombinant hCXCL16.



To detect hCXCL16 by Western Blot analysis this antibody can be used at a concentration of 0.1 - 0.2 μ g/ml. Used in conjunction with compatible secondary reagents the detection limit for recombinant hCXCL16 is 1.5-3.0 ng/lane, under either reducing or non-reducing conditions.



This antibody stained formalin-fixed paraffin-embedded sections of human colorectal adenocarcinoma tissue. The recommended concentration is 0.5 μ g/ml with an overnight incubation at 4°C. An HRP-labeled polymer detection system was used with a DAB chromogen. Antigen retrieval is not required for these conditions. Optimal concentrations and conditions may vary.



This antibody stained formalin-fixed paraffin-embedded sections of human colorectal adenocarcinoma tissue. The recommended concentration is 0.5 μ g/ml with an overnight incubation at 4°C. An HRP-labeled polymer detection system was used with a DAB chromogen. Antigen retrieval is not required for these conditions. Optimal concentrations and conditions may vary.

Specifications

SPECIES REACTIVITY: Human

TESTED APPLICATIONS:	ELISA, WB
APPLICATIONS:	ELISA:
	To detect hCXCL16 by direct ELISA (using 100 uL/well antibody solution) a concentration of at least 0.5 ug/mL of this antibody is required. This antigen affinity purified antibody, in conjunction with compatible secondary reagents, allows the detection of 0.2 - 0.4 ng/well of recombinant hCXCL16.
	Sandwich: To detect hCXCL16 by sandwich ELISA (using 100 uL/well antibody solution) a concentration of 0.5 - 2.0 ug/mL of this antibody is required. This antigen affinity purified antibody, in conjunction with our Biotinylated Anti-Human CXCL16 (XP-5117Bt) as a detection antibody, allows the detection of at least 0.2 - 0.4 ng/well of recombinant hCXCL16.
	Western Blot: To detect hCXCL16 by Western Blot analysis this antibody can be used at a concentration of 0.1 - 0.2 ug/mL. Used in conjunction with compatible secondary reagents the detection limit for recombinant hCXCL16 is 1.5 - 3.0 ng/lane, under either reducing or non-reducing conditions.
USER NOTE:	Centrifuge vial prior to opening.
IMMUNOGEN:	Produced from sera of rabbits pre-immunized with highly pure (>98%) recombinant hCXCL16 (human CXCL16).
HOST SPECIES:	Rabbit

Properties

PURIFICATION:	Anti-hCXCL16 specific antibody was purified by affinity chromatography employing immobilized hCXCL16 matrix.
PHYSICAL STATE:	Lyophilized
STORAGE CONDITIONS:	CXCL16 antibody is stable for at least 2 years from date of receipt at -20°C. The reconstituted antibody is stable for at least two weeks at 2-8°C. Frozen aliquots are stable for at least 6 months when stored at -20°C. Avoid repeated freeze-thaw cycles.
CLONALITY:	Polyclonal
CONJUGATE:	Unconjugated

Additional Info

ALTERNATE NAMES:	SRPSOX, CXCLG16, SR-PSOX, SCYB16, SRPSOX, UNQ2759/PRO6714, C-X-C motif chemokine 16, Scavenger receptor for phosphatidylserine and oxidized low density lipoprotein
ACCESSION NO.:	Q9H2A7
PROTEIN GI NO.:	209572770
OFFICIAL SYMBOL:	CXCL16
GENE ID:	58191

Background

FOR RESEARCH USE ONLY

October 19, 2017