

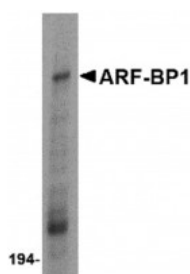
ProSci Incorporated
12170 Flint Place
Poway, CA 92064

Toll Free: +1 (888) 513 9525
Local: +1 (858) 513 2638
Fax: +1 (858) 513 2692

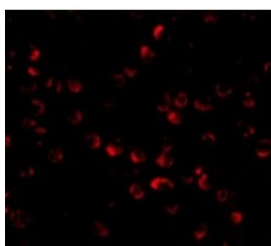
techsupport@prosci-inc.com
prosci-inc.com

ARF-BP1 Antibody

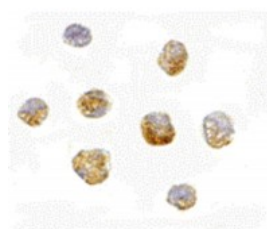
CATALOG NUMBER: 4213



Western blot analysis of ARF-BP1 in Daudi cell lysate with ARF-BP1 antibody at 1 µg/mL.



Immunofluorescence of ARF-BP1 in Daudi cells with ARF-BP1 antibody at 20 µg/mL.



Immunocytochemistry of ARF-BP1 in Daudi cells with ARF-BP1 antibody at 5 µg/mL.

Specifications

| | |
|-----------------------------|--|
| SPECIES REACTIVITY: | Human, Mouse, Rat |
| TESTED APPLICATIONS: | ELISA, ICC, IF, WB |
| APPLICATIONS: | ARF-BP1 antibody can be used for detection of ARF-BP1 by Western blot at 1 µg/mL. Antibody can also be used for immunocytochemistry starting at 5 µg/mL. For immunofluorescence start at 20 µg/mL. |
| USER NOTE: | Optimal dilutions for each application to be determined by the researcher. |
| POSITIVE CONTROL: | 1) Cat. No. 1224 - Daudi Cell Lysate |
| IMMUNOGEN: | ARF-BP1 antibody was raised against a 19 amino acid synthetic peptide from near the carboxy terminus of human ARF-BP1. The immunogen is located within amino acids 4250 - 4300 of ARF-BP1. |
| HOST SPECIES: | Rabbit |

Properties

| | |
|----------------------------|---|
| PURIFICATION: | ARF-BP1 Antibody is affinity chromatography purified via peptide column. |
| PHYSICAL STATE: | Liquid |
| BUFFER: | ARF-BP1 Antibody is supplied in PBS containing 0.02% sodium azide. |
| CONCENTRATION: | 1 mg/mL |
| STORAGE CONDITIONS: | ARF-BP1 antibody can be stored at 4°C for three months and -20°C, stable for up to one year. As with all antibodies care should be taken to avoid repeated freeze thaw cycles. Antibodies should not be exposed to prolonged high temperatures. |
| CLONALITY: | Polyclonal |
| ISOTYPE: | IgG |
| CONJUGATE: | Unconjugated |

Additional Info

| | |
|-------------------------|---|
| ALTERNATE NAMES: | ARF-BP1 Antibody: MULE, lb772, LASU1, UREB1, HECTH9, URE-B1, ARF-BP1, HSPC272, KIAA0312, KIAA1578, E3 ubiquitin-protein ligase HUWE1, ARF-binding protein 1 |
| ACCESSION NO.: | NP_113584 |
| PROTEIN GI NO.: | 61676188 |
| OFFICIAL SYMBOL: | HUWE1 |
| GENE ID: | 10075 |

Background

| | |
|--------------------|--|
| BACKGROUND: | ARF-BP1 Antibody: The ARF tumor suppressor is a critical regulator of p53 stability. In addition to p53, ARF1 binds to other proteins such as MDM2 and ARF-BP1, a large protein containing HECT, UBA and WWE motifs. ARF-BP1 directly binds and ubiquitinates p53; this activity is inhibited by ARF, indicating that ARF-BP1 is a critical mediator of the p53-dependent and p53-independent tumor suppressor functions of ARF. ARF-BP1 can also catalyze the polyubiquitination of Mcl-1, an anti-apoptotic Bcl-2 family member involved in DNA damage-induced apoptosis. Elimination of ARF-BP1 expression by RNA interference stabilized Mcl-1 protein, resulting in an attenuation of apoptosis induced by DNA-damage agents. |
| REFERENCES: | 1) Gallagher SJ, Kefford RF and Rizos H. The ARF tumour suppressor. <i>Int. J. Biochem. Cell Biol.</i> 2006; 38:1637-41. 2) Pomerantz J, Schreiber-Agus N, Leigeois NJ, et al. The Ink4a tumor suppressor gene product, p19ARF interacts with MDM2 and neutralizes MDM2's inhibition of p53. <i>Cell</i> 1998; 92:725-34. 3) Chen D, Kon N, Li M, et al. ARF-BP1/Mule is a critical mediator of the ARF tumor suppressor. <i>Cell</i> 2005; 121:1071-83. 4) Zhong Q, Gao W, Du F, et al. Mule/ARF-BP1, a BH3-only E3 ubiquitin ligase, catalyzes the polyubiquitination of Mcl-1 and regulates apoptosis. <i>Cell</i> 2005; 121:1085-95. |

FOR RESEARCH USE ONLY

October 21, 2017