



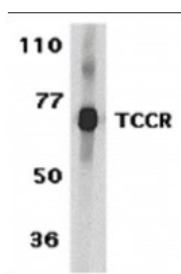
ProSci Incorporated
12170 Flint Place
Poway, CA 92064

Toll Free: +1 (888) 513 9525
Local: +1 (858) 513 2638
Fax: +1 (858) 513 2692

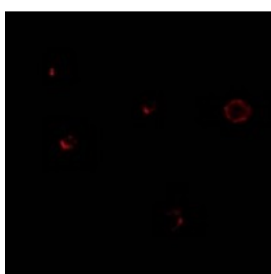
techsupport@prosci-inc.com
prosci-inc.com

TCCR Antibody

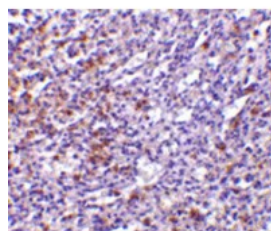
CATALOG NUMBER: 2481



Western blot analysis of TCCR expression in human spleen tissue lysates with TCCR antibody at 1 ug/ml.



Immunofluorescence of TCCR in A549 cells with TCCR antibody at 20 ug/mL.



Immunohistochemistry of TCCR in human spleen tissue with TCCR antibody at 10 ug/mL.

Specifications

SPECIES REACTIVITY:	Human
HOMOLOGY:	Predicted species reactivity based on immunogen sequence: Mouse: (87%)
TESTED APPLICATIONS:	ELISA, IF, IHC-P, WB
APPLICATIONS:	TCCR antibody can be used for detection of TCCR by Western blot at 1 ug/mL. An approximately 70 kDa band can be detected. Antibody can also be used for immunohistochemistry starting at 10 ug/mL. For immunofluorescence start at 20 ug/mL.
USER NOTE:	Optimal dilutions for each application to be determined by the researcher.
POSITIVE CONTROL:	1) Cat. No. 1306 - Human Spleen Tissue Lysate 2) Cat. No. 10-901 - Human Spleen Tissue Slide 3) Cat. No. 17-003 - A549 Cell Slide
PREDICTED MOLECULAR WEIGHT:	70 kDa
IMMUNOGEN:	TCCR antibody was raised against a synthetic peptide corresponding to amino acids near the amino terminus of human TCCR precursor. The immunogen is located within the first 50 amino acids of TCCR.
HOST SPECIES:	Rabbit

Properties

PURIFICATION:	TCCR Antibody is affinity chromatography purified via peptide column.
PHYSICAL STATE:	Liquid
BUFFER:	TCCR Antibody is supplied in PBS containing 0.02% sodium azide.
STORAGE CONDITIONS:	TCCR antibody can be stored at 4°C for three months and -20°C, stable for up to one year. As with all antibodies care should be taken to avoid repeated freeze thaw cycles. Antibodies should not be exposed to prolonged high temperatures.

CLONALITY:	Polyclonal
ISOTYPE:	IgG
CONJUGATE:	Unconjugated

Additional Info

ALTERNATE NAMES:	TCCR Antibody: CRL1, TCCR, WSX1, IL27R, IL-27RA, zcytor1, CRL1, UNQ296/PRO336, Interleukin-27 receptor subunit alpha, Cytokine receptor WSX-1, IL-27 receptor subunit alpha
ACCESSION NO.:	NP_004834
PROTEIN GI NO.:	4759328
OFFICIAL SYMBOL:	IL27RA
GENE ID:	9466

Background

BACKGROUND: TCCR Antibody: Upon antigen challenge, T-helper cells differentiate into two functional distinct subsets, Th1 and Th2. Th1 cells produce IL-2, IFN-gamma and lymphotoxin-beta that augment cell mediated immune response while Th2 cells secrete IL-4, IL-5, and IL-10 that enhance humoral immunity. The function of T-helper cells is regulated by cytokines. A novel cytokine receptor was recently identified and cloned. It is a new member in the type I cytokine receptor family and designated TCCR for T-cell cytokine receptor and WSX-1. TCCR deficient mice had impaired Th1 responses to protein antigen challenge, including decreased levels of IFN-gamma and Th1-dependent antibody IgG2a. TCCR is predominately expressed in thymus, spleen, lymph nodes and peripheral blood leukocytes.

REFERENCES:

- 1) Chen Q, Ghilardi N, Wang H, Baker T, Xie MH, Gurney A, Grewal IS and de Sauvage FJ. Development of Th1-type immune responses requires the type I cytokine receptor TCCR *Nature* 2000;407(6806):916-920
- 2) Sprecher, C.A., Grant, F.J., Baumgartner, J.W., Presnell, S.R., Schrader, S.K., Yamagiwa, T., Whitmore, T.E., O'Hara, P.J. and Foster, D.F. Cloning and characterization of a novel class I cytokine receptor *Biochem. Biophys. Res. Commun.* 1998;246(1):82-90

FOR RESEARCH USE ONLY

October 19, 2017