

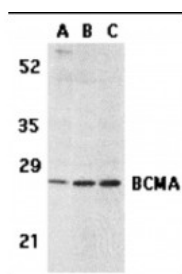
ProSci Incorporated
12170 Flint Place
Poway, CA 92064

Toll Free: +1 (888) 513 9525
Local: +1 (858) 513 2638
Fax: +1 (858) 513 2692

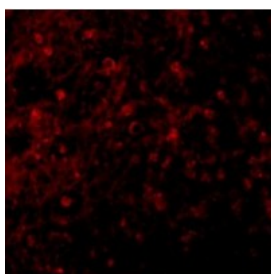
techsupport@prosci-inc.com
prosci-inc.com

BCMA Antibody

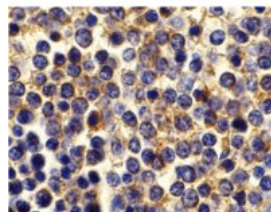
CATALOG NUMBER: 2397



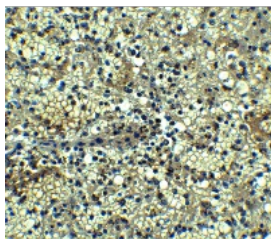
Western blot analysis of BCMA in (A) human spleen tissue lysate, (B) K562, and (C) U937 cell lysates with BCMA antibody at 5 ug/mL.



Immunofluorescence of BCMA in Human Spleen tissue with BCMA antibody at 10 ug/mL.



Immunohistochemistry of BCMA in human spleen tissue with BCMA antibody at 10 ug/mL.



Immunohistochemistry of BCMA in human spleen tissue with BCMA antibody at 5 ug/mL.

Specifications

SPECIES REACTIVITY:	Human
TESTED APPLICATIONS:	ELISA, IF, IHC-P, WB
APPLICATIONS:	BCMA antibody can be used for detection of BCMA by Western blot at 5 ug/mL. Antibody can also be used for immunohistochemistry starting at 5 ug/mL. For immunofluorescence start at 20 ug/mL.
USER NOTE:	Optimal dilutions for each application to be determined by the researcher.
POSITIVE CONTROL:	1) Cat. No. 1204 - K562 Cell Lysate 2) Cat. No. 1215 - U937 Cell Lysate 3) Cat. No. 1306 - Human Spleen Tissue Lysate 4) Cat. No. 10-901 - Human Spleen Tissue Slide
PREDICTED MOLECULAR WEIGHT:	Predicted: 20 kDa Observed: 27 kDa
IMMUNOGEN:	BCMA antibody was raised against a 16 amino acid synthetic peptide mapping at the carboxy terminus of human BCMA.

The immunogen is located within the last 50 amino acids of BCMA.

HOST SPECIES: Rabbit

Properties

PURIFICATION: BCMA Antibody is affinity chromatography purified via peptide column.

PHYSICAL STATE: Liquid

BUFFER: BCMA Antibody is supplied in PBS containing 0.02% sodium azide.

CONCENTRATION: 1 mg/mL

STORAGE CONDITIONS: BCMA antibody can be stored at 4°C for three months and -20°C, stable for up to one year. As with all antibodies care should be taken to avoid repeated freeze thaw cycles. Antibodies should not be exposed to prolonged high temperatures.

CLONALITY: Polyclonal

ISOTYPE: IgG

CONJUGATE: Unconjugated

Additional Info

ALTERNATE NAMES: BCMA Antibody: BCM, BCMA, CD269, TNFRSF13A, BCM, Tumor necrosis factor receptor superfamily member 17, B-cell maturation protein

ACCESSION NO.: NP_001183

PROTEIN GI NO.: 23238192

OFFICIAL SYMBOL: TNFRSF17

GENE ID: 608

Background

BACKGROUND: BCMA Antibody: Members in the TNF superfamily regulate immune responses and induce apoptosis. Two novel members in the TNF family were recently identified and designated BAFF/BLyS/TALL-1/THANK/zTNF4 and April/TALL-2, respectively. BAFF was characterized as a B cell activator since it induced B cell proliferation and immunoglobulin secretion. April regulates immunological and non-immunological cell growth. Three receptors, BCMA (for B cell maturation protein), TACI, and BAFF-R, for BAFF were recently identified. BCMA, like TACI, binds BAFF and April. BAFF and its receptors induce B cell development and survival, activate NF- κ B and c-jun N-terminal kinase, and are involved in B cell associated autoimmune diseases.

REFERENCES:

- 1) Moore PA, Belvedere O, Orr A, et al. BLyS: member of the tumor necrosis factor family and B lymphocyte stimulator. *Science* 1999; 285:260-3
- 2) Schneider P, MacKay F, Steiner V, et al. BAFF, a novel ligand of the tumor necrosis factor family, stimulates B cell growth. *J. Exp. Med.* 1999; 189:1747-56
- 3) Shu HB, Hu WH, Johnson H. TALL-1 is a novel member of the TNF family that is down-regulated by mitogens. *J. Leukoc. Biol.* 1999; 65:680-3
- 4) Mukhopadhyay A, Ni J, Zhai Y, et al. Identification and characterization of a novel cytokine, THANK, a TNF homologue that activates apoptosis, nuclear factor- κ B, and c-Jun NH2-terminal kinase. *J. Biol. Chem.* 1999; 274:15978-81

FOR RESEARCH USE ONLY

October 20, 2017